

---

# NYISO CEO/COO Report

*Management Committee Meeting  
December 18, 2012*

*Agenda #3*

# Report Items

---

## CEO Report

- Infrastructure Master Plan

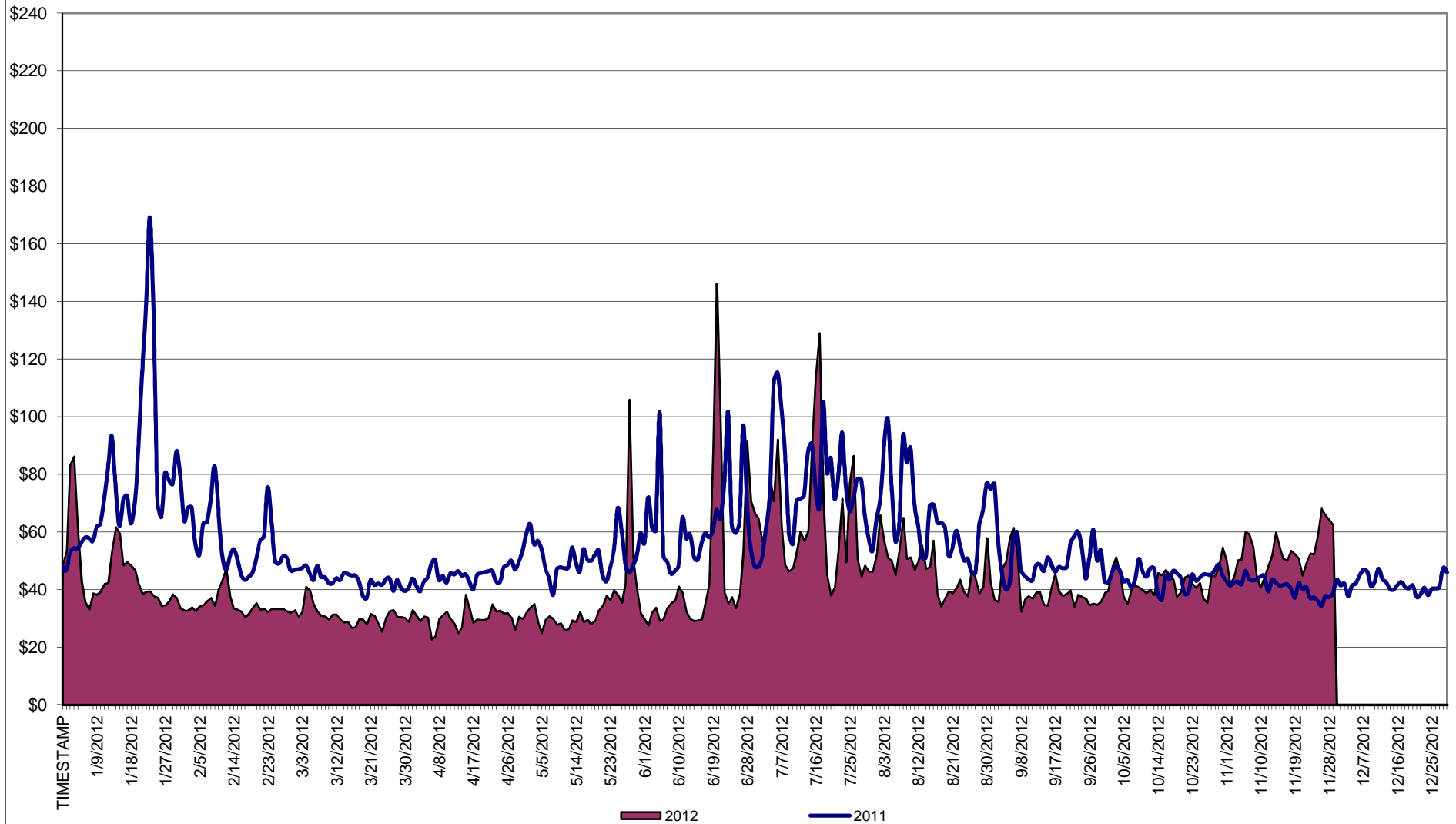
## COO Report

- Market Performance Highlights – For Information Only
- Operations Performance Metrics Monthly Report

# Market Performance Highlights for November 2012

- **LBMP for November is \$50.15/MWh, higher than \$39.28/MWh in October 2012.**
  - Day Ahead and Real Time Load Weighted LBMPs are higher compared to October 2012.
- **Average monthly year-to-date cost of \$45.01/MWh is an increase from the previous month's \$44.19/MWh, but lower than November 2011 year-to-date cost of \$57.76.**
- **Average daily sendout is 410GWh/day in November; higher than 398GWh/day in October 2012 and 408 GWh/day in November 2011.**
- **Natural gas prices are higher while distillate prices are down compared to the previous month.**
  - Natural Gas (Transco Z6 NY) is \$4.05/MMBtu, higher than \$3.48/MMBtu in October.
  - Jet Kerosene Gulf Coast is \$21.91/MMBtu, down from \$23.06/MMBtu in October.
  - Ultra Low Sulfur No.2 Diesel NY Harbor is \$22.74/MMBtu, down from \$23.14/MMBtu in October.
- **Uplift per MWh is higher compared to the previous month.**
  - Uplift (not including NYISO cost of operations) is \$0.79/MWh, higher than \$0.71/MWh in October.
    - The Local Reliability Share is \$0.69/MWh, higher than \$0.66 in October.
    - The Statewide Share is \$0.10/MWh, higher than \$0.05/MWh in October.
  - TSA \$ per NYC MWh is \$0.00/MWh.
  - Total uplift costs (Schedule 1 components including NYISO Cost of Operations) are higher than October.

**Daily NYISO Average Cost/MWh (Energy & Ancillary Services)\***  
 2011 Annual Average \$56.47/MWh  
 November 2011YTD Average \$57.76/MWh  
 November 2012YTD Average \$45.01/MWh



\* Excludes ICAP payments.

Data reflects true-ups thru August 2012.

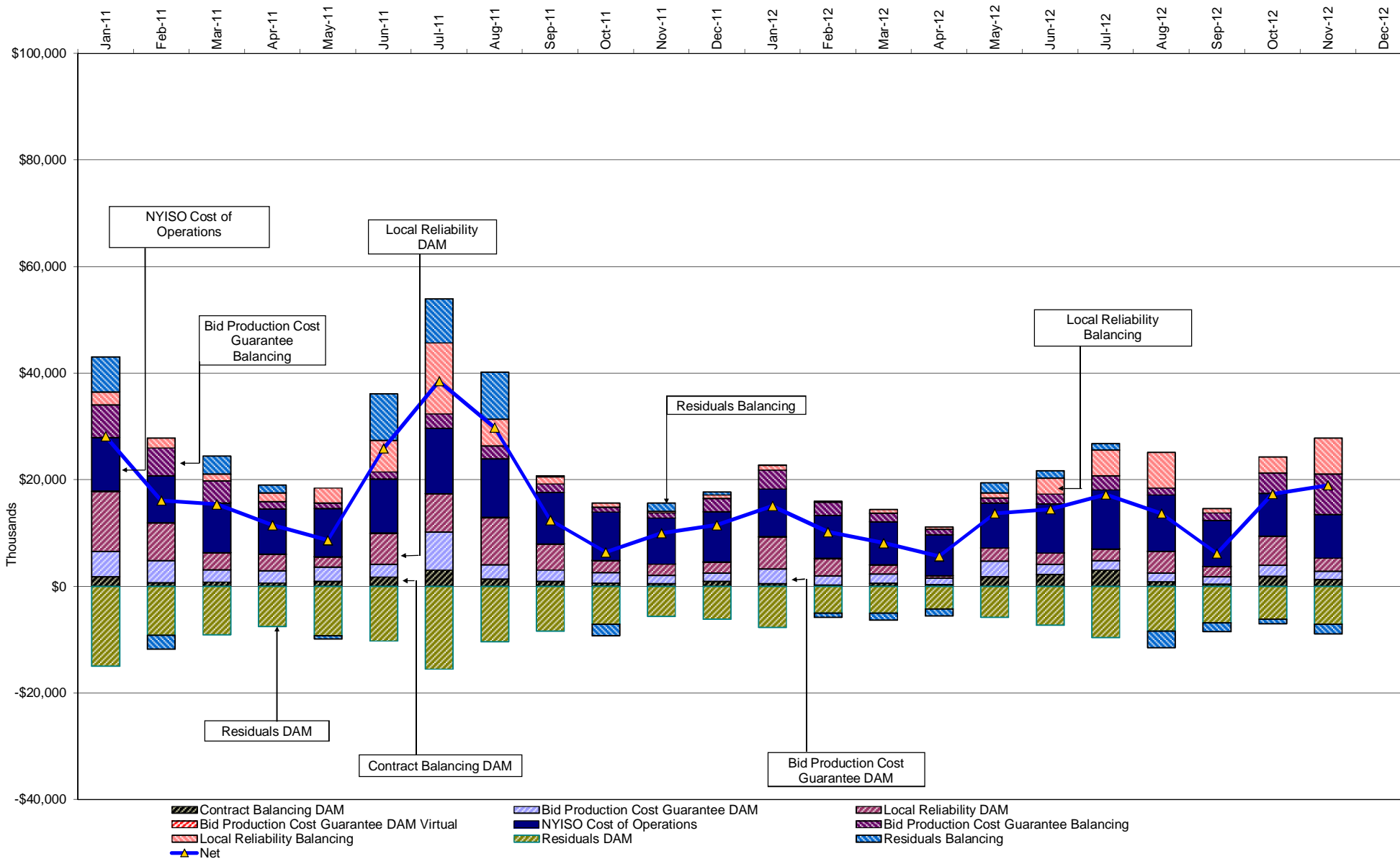
**NYISO Average Cost/MWh (Energy and Ancillary Services)\***  
**from the LBMP Customer point of view**

<b>2012</b>	<u>January</u>	<u>February</u>	<u>March</u>	<u>April</u>	<u>May</u>	<u>June</u>	<u>July</u>	<u>August</u>	<u>September</u>	<u>October</u>	<u>November</u>	<u>December</u>
LBMP	44.00	32.45	28.98	28.31	34.68	47.35	63.78	46.22	39.59	39.28	50.15	
NTAC	0.85	0.80	0.68	0.71	0.72	0.77	0.58	0.56	0.47	0.70	0.75	
Reserve	0.35	0.25	0.38	0.32	0.13	0.36	0.36	0.22	0.23	0.29	0.40	
Regulation	0.10	0.08	0.13	0.12	0.09	0.15	0.15	0.12	0.09	0.10	0.11	
NYISO Cost of Operations	0.64	0.64	0.64	0.64	0.64	0.64	0.64	0.64	0.64	0.64	0.64	
Uplift	0.44	0.17	0.00	(0.18)	(0.11)	0.25	0.08	0.04	(0.40)	0.71	0.79	
Uplift: Local Reliability Share	0.49	0.27	0.19	0.07	0.25	0.36	0.41	0.65	0.20	0.66	0.69	
Uplift: Statewide Share	(0.05)	(0.10)	(0.19)	(0.25)	(0.36)	(0.11)	(0.33)	(0.61)	(0.59)	0.05	0.10	
Voltage Support and Black Start	0.37	0.37	0.37	0.37	0.37	0.37	0.37	0.37	0.37	0.37	0.37	
<b>Avg Monthly Cost</b>	<b>46.75</b>	<b>34.75</b>	<b>31.19</b>	<b>30.29</b>	<b>36.52</b>	<b>49.89</b>	<b>65.97</b>	<b>48.17</b>	<b>41.00</b>	<b>42.10</b>	<b>53.21</b>	
Avg YTD Cost	46.75	41.12	37.96	36.09	36.18	38.82	44.17	44.79	44.39	44.19	45.01	
TSA \$ per NYC MWh	0.00	0.00	0.00	0.00	1.52	0.45	0.85	0.46	0.59	0.00	0.00	
<b>2011</b>	<u>January</u>	<u>February</u>	<u>March</u>	<u>April</u>	<u>May</u>	<u>June</u>	<u>July</u>	<u>August</u>	<u>September</u>	<u>October</u>	<u>November</u>	<u>December</u>
LBMP	74.91	55.60	46.98	46.44	48.49	60.33	75.76	56.04	46.86	42.49	38.97	39.73
NTAC	0.62	0.75	0.86	0.81	1.13	1.22	0.66	0.60	0.43	0.56	0.62	0.69
Reserve	0.44	0.50	0.41	0.43	0.48	0.28	0.28	0.13	0.25	0.41	0.26	0.28
Regulation	0.20	0.18	0.15	0.12	0.10	0.15	0.12	0.09	0.08	0.09	0.08	0.09
NYISO Cost of Operations	0.70	0.70	0.70	0.70	0.70	0.70	0.70	0.70	0.70	0.70	0.70	0.70
Uplift	1.26	0.58	0.45	0.21	(0.02)	0.61	1.42	0.65	0.15	(0.21)	0.11	0.15
Uplift: Local Reliability Share	0.95	0.71	0.33	0.38	0.36	0.82	1.19	0.87	0.45	0.23	0.19	0.19
Uplift: Statewide Share	0.31	(0.12)	0.12	(0.18)	(0.38)	(0.21)	0.24	(0.21)	(0.30)	(0.44)	(0.08)	(0.05)
Voltage Support and Black Start	0.37	0.37	0.37	0.37	0.37	0.37	0.37	0.37	0.37	0.37	0.37	0.37
<b>Avg Monthly Cost</b>	<b>78.50</b>	<b>58.69</b>	<b>49.92</b>	<b>49.07</b>	<b>51.24</b>	<b>63.67</b>	<b>79.30</b>	<b>58.58</b>	<b>48.83</b>	<b>44.40</b>	<b>41.11</b>	<b>42.00</b>
Avg YTD Cost	78.50	68.82	62.36	59.14	57.52	58.70	62.77	62.13	60.66	59.18	57.76	56.47
TSA \$ per NYC MWh	0.00	0.00	0.00	0.13	0.00	1.45	0.38	1.59	0.15	0.00	0.00	0.00

\* Excludes ICAP payments.

Data reflects true-ups thru August 2012.

# NYISO Dollar Flows - Uplift - OATT Schedule 1 components - Data through November 30, 2012



## NYISO Markets Transactions

<b>2012</b>	<u>January</u>	<u>February</u>	<u>March</u>	<u>April</u>	<u>May</u>	<u>June</u>	<u>July</u>	<u>August</u>	<u>September</u>	<u>October</u>	<u>November</u>	<u>December</u>
<b>Day Ahead Market MWh</b>	14,877,279	13,473,786	13,590,456	12,482,692	13,324,441	14,898,725	17,946,019	17,185,445	14,262,425	13,354,729	12,839,137	
DAM LSE Internal LBMP Energy Sales	58%	57%	58%	59%	61%	63%	65%	63%	61%	60%	62%	
DAM External TC LBMP Energy Sales	1%	1%	0%	1%	1%	1%	1%	1%	0%	1%	3%	
DAM Bilateral - Internal Bilaterals	38%	40%	40%	38%	36%	35%	32%	34%	37%	38%	33%	
DAM Bilateral - Import/Non-LBMP Market Bilaterals	0%	0%	0%	0%	0%	0%	0%	0%	0%	0%	0%	
DAM Bilateral - Export/Non-LBMP Market Bilaterals	1%	2%	2%	2%	1%	1%	1%	1%	1%	1%	1%	
DAM Bilateral - Wheel Through Bilaterals	1%	0%	1%	1%	1%	1%	1%	1%	0%	0%	1%	
<b>Balancing Energy Market MWh</b>	-878,126	-816,828	-896,684	-371,022	-31,455	-534,794	-575,091	-528,572	-692,656	-759,328	15,462	
Balancing Energy LSE Internal LBMP Energy Sales	-110%	-111%	-110%	-126%	-561%	-129%	-126%	-138%	-121%	-125%	-1207%	
Balancing Energy External TC LBMP Energy Sales	9%	7%	7%	20%	347%	22%	19%	30%	13%	19%	1212%	
Balancing Energy Bilateral - Internal Bilaterals	1%	1%	1%	4%	107%	8%	6%	4%	4%	3%	6%	
Balancing Energy Bilateral - Import/Non-LBMP Market Bilaterals	0%	0%	0%	0%	0%	0%	0%	0%	0%	0%	0%	
Balancing Energy Bilateral - Export/Non-LBMP Market Bilaterals	4%	3%	3%	7%	54%	3%	2%	2%	3%	3%	116%	
Balancing Energy Bilateral - Wheel Through Bilaterals	-3%	0%	-1%	-4%	-46%	-5%	0%	2%	1%	0%	-28%	
<b>Transactions Summary</b>												
LBMP	57%	56%	55%	59%	61%	62%	65%	63%	59%	58%	65%	
Internal Bilaterals	41%	42%	43%	39%	36%	36%	33%	35%	39%	40%	33%	
Import Bilaterals	0%	0%	0%	0%	0%	0%	0%	0%	0%	0%	0%	
Export Bilaterals	2%	2%	2%	2%	2%	1%	1%	1%	1%	2%	2%	
Wheels Through	1%	0%	1%	1%	1%	1%	1%	1%	1%	0%	1%	
<b>Market Share of Total Load</b>												
Day Ahead Market	106.3%	106.5%	107.1%	103.1%	100.2%	103.7%	103.3%	103.2%	105.1%	106.0%	99.9%	
Balancing Energy +	-6.3%	-6.5%	-7.1%	-3.1%	-0.2%	-3.7%	-3.3%	-3.2%	-5.1%	-6.0%	0.1%	
Total MWh	13,999,153	12,656,958	12,693,772	12,111,670	13,292,986	14,363,931	17,370,928	16,656,873	13,569,769	12,595,401	12,854,599	
Average Daily Energy Sendout/Month GWh	443	431	407	396	420	471	551	529	447	398	410	
<b>2011</b>	<u>January</u>	<u>February</u>	<u>March</u>	<u>April</u>	<u>May</u>	<u>June</u>	<u>July</u>	<u>August</u>	<u>September</u>	<u>October</u>	<u>November</u>	<u>December</u>
<b>Day Ahead Market MWh</b>	14,146,283	12,514,435	13,164,026	12,191,562	12,809,240	14,520,490	17,296,367	15,872,137	14,052,940	13,263,167	12,710,654	14,300,553
DAM LSE Internal LBMP Energy Sales	49%	54%	53%	55%	55%	57%	60%	62%	59%	54%	55%	59%
DAM External TC LBMP Energy Sales	1%	1%	2%	2%	1%	1%	2%	1%	1%	4%	2%	1%
DAM Bilateral - Internal Bilaterals	42%	43%	43%	41%	41%	39%	36%	35%	39%	41%	41%	37%
DAM Bilateral - Import/Non-LBMP Market Bilaterals	5%	0%	0%	0%	0%	0%	0%	0%	0%	0%	0%	0%
DAM Bilateral - Export/Non-LBMP Market Bilaterals	1%	1%	2%	2%	2%	1%	1%	1%	1%	2%	2%	1%
DAM Bilateral - Wheel Through Bilaterals	1%	1%	1%	0%	1%	1%	1%	1%	1%	0%	0%	1%
<b>Balancing Energy Market MWh</b>	311,996	210,141	250,339	35,941	192,443	44,238	221,519	-31,911	-203,622	-205,237	-284,573	-689,219
Balancing Energy LSE Internal LBMP Energy Sales	28%	24%	39%	-226%	40%	-141%	29%	-371%	-147%	-181%	-129%	-115%
Balancing Energy External TC LBMP Energy Sales	48%	50%	50%	197%	39%	271%	77%	327%	53%	59%	21%	13%
Balancing Energy Bilateral - Internal Bilaterals	15%	7%	8%	47%	14%	37%	0%	-1%	5%	11%	0%	0%
Balancing Energy Bilateral - Import/Non-LBMP Market Bilaterals	0%	0%	0%	0%	0%	0%	0%	0%	0%	0%	0%	0%
Balancing Energy Bilateral - Export/Non-LBMP Market Bilaterals	6%	14%	13%	83%	10%	32%	6%	39%	8%	10%	9%	4%
Balancing Energy Bilateral - Wheel Through Bilaterals	3%	5%	-10%	-1%	-2%	-100%	-12%	-94%	-18%	1%	-2%	-2%
<b>Transactions Summary</b>												
LBMP	51%	55%	55%	57%	57%	59%	63%	63%	59%	56%	56%	58%
Internal Bilaterals	42%	42%	42%	41%	41%	39%	36%	36%	39%	42%	42%	39%
Import Bilaterals	5%	0%	0%	0%	0%	0%	0%	0%	0%	0%	0%	0%
Export Bilaterals	2%	2%	2%	2%	2%	1%	1%	1%	1%	2%	2%	2%
Wheels Through	1%	1%	1%	0%	1%	1%	1%	1%	0%	0%	0%	1%
<b>Market Share of Total Load</b>												
Day Ahead Market	97.8%	98.3%	98.1%	99.7%	98.5%	99.7%	98.7%	100.2%	101.5%	101.6%	102.3%	105.1%
Balancing Energy +	2.2%	1.7%	1.9%	0.3%	1.5%	0.3%	1.3%	-0.2%	-1.5%	-1.6%	-2.3%	-5.1%
Total MWh	14,458,279	12,724,575	13,414,365	12,227,503	13,001,683	14,564,728	17,517,885	15,840,226	13,849,318	13,057,930	12,426,081	13,611,334
Average Daily Energy Sendout/Month GWh	457	447	422	398	411	479	555	505	456	403	408	430

+ Balancing Energy: Load(MW) purchased at Real Time LBMP.

\* The signs for the detail section intuitively reflect the direction of power flow eliminating the use of double negatives when Balancing Energy is negative.

Notes: Percent totals may not equal 100% due to rounding.  
Virtual Transactions are not reflected in this chart.

### NYISO Markets 2012 Energy Statistics

	<u>January</u>	<u>February</u>	<u>March</u>	<u>April</u>	<u>May</u>	<u>June</u>	<u>July</u>	<u>August</u>	<u>September</u>	<u>October</u>	<u>November</u>	<u>December</u>
<b><u>DAY AHEAD LBMP</u></b>												
Price *	\$40.91	\$31.15	\$27.44	\$26.88	\$29.79	\$38.71	\$53.95	\$41.17	\$35.74	\$37.10	\$47.31	
Standard Deviation	\$15.62	\$6.23	\$7.00	\$7.04	\$10.22	\$31.58	\$32.19	\$15.94	\$11.26	\$8.21	\$11.52	
Load Weighted Price **	\$42.20	\$31.73	\$28.25	\$27.72	\$31.33	\$43.17	\$58.33	\$43.57	\$37.44	\$38.19	\$48.58	
<b><u>RTC LBMP</u></b>												
Price *	\$37.93	\$30.31	\$28.15	\$27.19	\$34.27	\$34.58	\$51.05	\$41.79	\$34.76	\$34.11	\$46.72	
Standard Deviation	\$23.43	\$7.26	\$22.87	\$15.67	\$46.03	\$57.26	\$60.86	\$22.90	\$23.14	\$19.02	\$33.25	
Load Weighted Price **	\$39.19	\$30.75	\$28.93	\$27.97	\$37.49	\$38.48	\$55.17	\$44.03	\$36.77	\$35.33	\$48.69	
<b><u>REAL TIME LBMP</u></b>												
Price *	\$37.35	\$30.54	\$28.47	\$27.00	\$35.22	\$34.29	\$50.68	\$41.95	\$36.05	\$36.24	\$47.35	
Standard Deviation	\$23.75	\$9.77	\$20.94	\$15.14	\$56.38	\$55.53	\$51.60	\$23.86	\$26.89	\$14.43	\$27.30	
Load Weighted Price **	\$38.88	\$31.14	\$29.44	\$27.89	\$40.06	\$39.34	\$55.54	\$44.81	\$38.59	\$37.43	\$48.98	
Average Daily Energy Sendout/Month GWh	443	431	407	396	420	471	551	529	447	398	410	

### NYISO Markets 2011 Energy Statistics

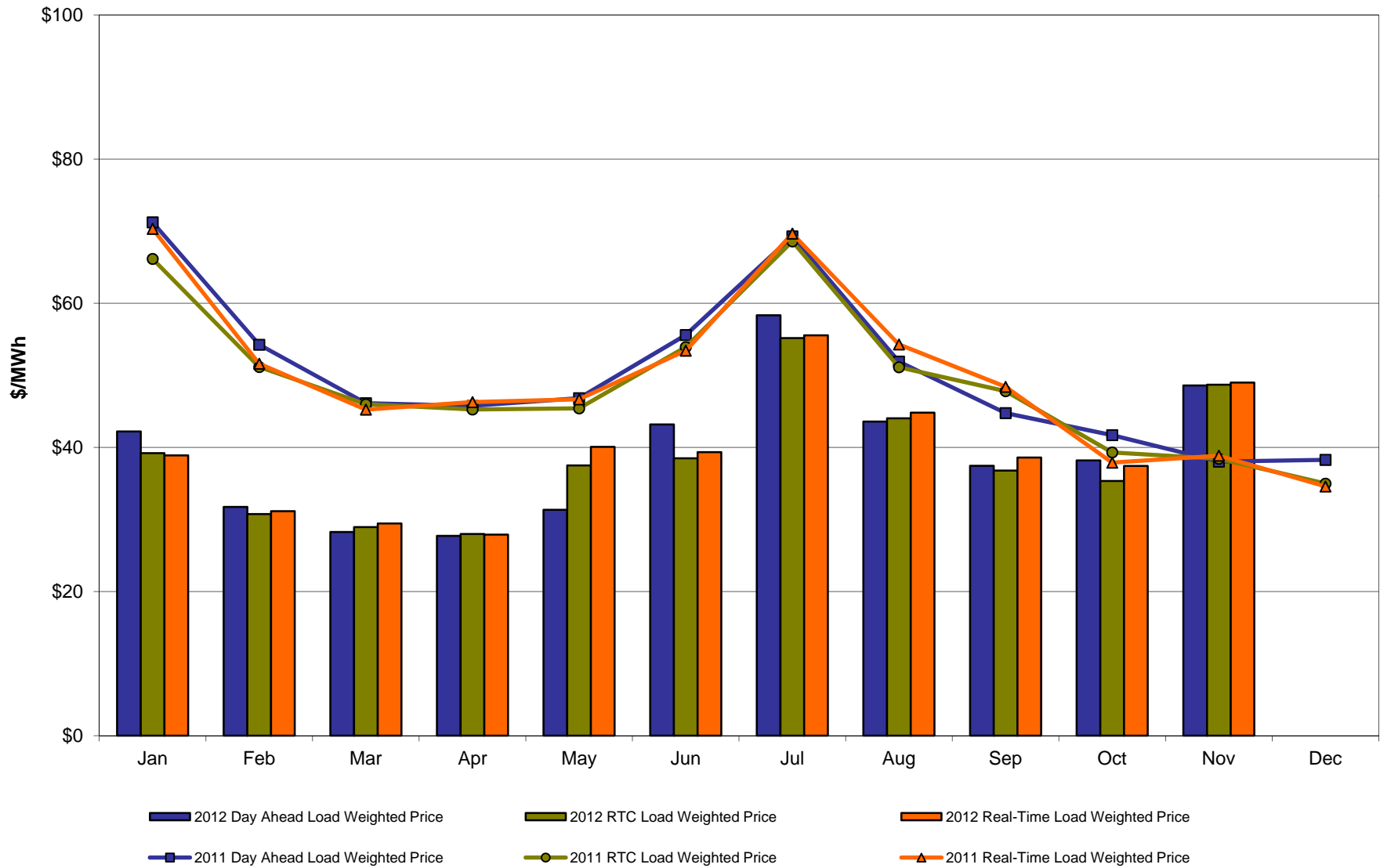
	<u>January</u>	<u>February</u>	<u>March</u>	<u>April</u>	<u>May</u>	<u>June</u>	<u>July</u>	<u>August</u>	<u>September</u>	<u>October</u>	<u>November</u>	<u>December</u>
<b><u>DAY AHEAD LBMP</u></b>												
Price *	\$69.03	\$52.87	\$45.20	\$44.80	\$45.20	\$52.26	\$64.60	\$49.59	\$43.28	\$40.38	\$37.12	\$37.31
Standard Deviation	\$30.78	\$14.77	\$9.06	\$8.22	\$11.77	\$26.24	\$34.99	\$16.62	\$10.26	\$9.30	\$7.64	\$9.13
Load Weighted Price **	\$71.22	\$54.24	\$46.13	\$45.77	\$46.83	\$55.58	\$69.28	\$51.90	\$44.76	\$41.70	\$38.02	\$38.27
<b><u>RTC LBMP</u></b>												
Price *	\$64.48	\$50.15	\$45.13	\$44.32	\$43.69	\$50.47	\$63.42	\$48.47	\$46.02	\$38.44	\$37.43	\$34.00
Standard Deviation	\$39.41	\$18.83	\$18.96	\$15.44	\$25.19	\$46.41	\$82.29	\$59.95	\$25.18	\$15.45	\$17.55	\$15.60
Load Weighted Price **	\$66.15	\$51.15	\$45.98	\$45.25	\$45.41	\$53.91	\$68.58	\$51.12	\$47.80	\$39.30	\$38.43	\$34.97
<b><u>REAL TIME LBMP</u></b>												
Price *	\$67.92	\$50.26	\$44.22	\$45.20	\$44.26	\$48.68	\$62.96	\$49.39	\$45.92	\$36.91	\$37.67	\$33.50
Standard Deviation	\$58.47	\$22.39	\$17.41	\$19.98	\$26.27	\$44.88	\$64.83	\$62.04	\$26.88	\$13.65	\$19.42	\$14.12
Load Weighted Price **	\$70.32	\$51.61	\$45.24	\$46.28	\$46.66	\$53.42	\$69.66	\$54.28	\$48.40	\$37.88	\$38.84	\$34.57
Average Daily Energy Sendout/Month GWh	457	447	422	398	411	479	555	505	456	402	408	430

\* Average zonal load weighted prices.

\*\* Average zonal load weighted prices, load weighted in each hour.



### NYISO Monthly Average Internal LBMPs 2011- 2012

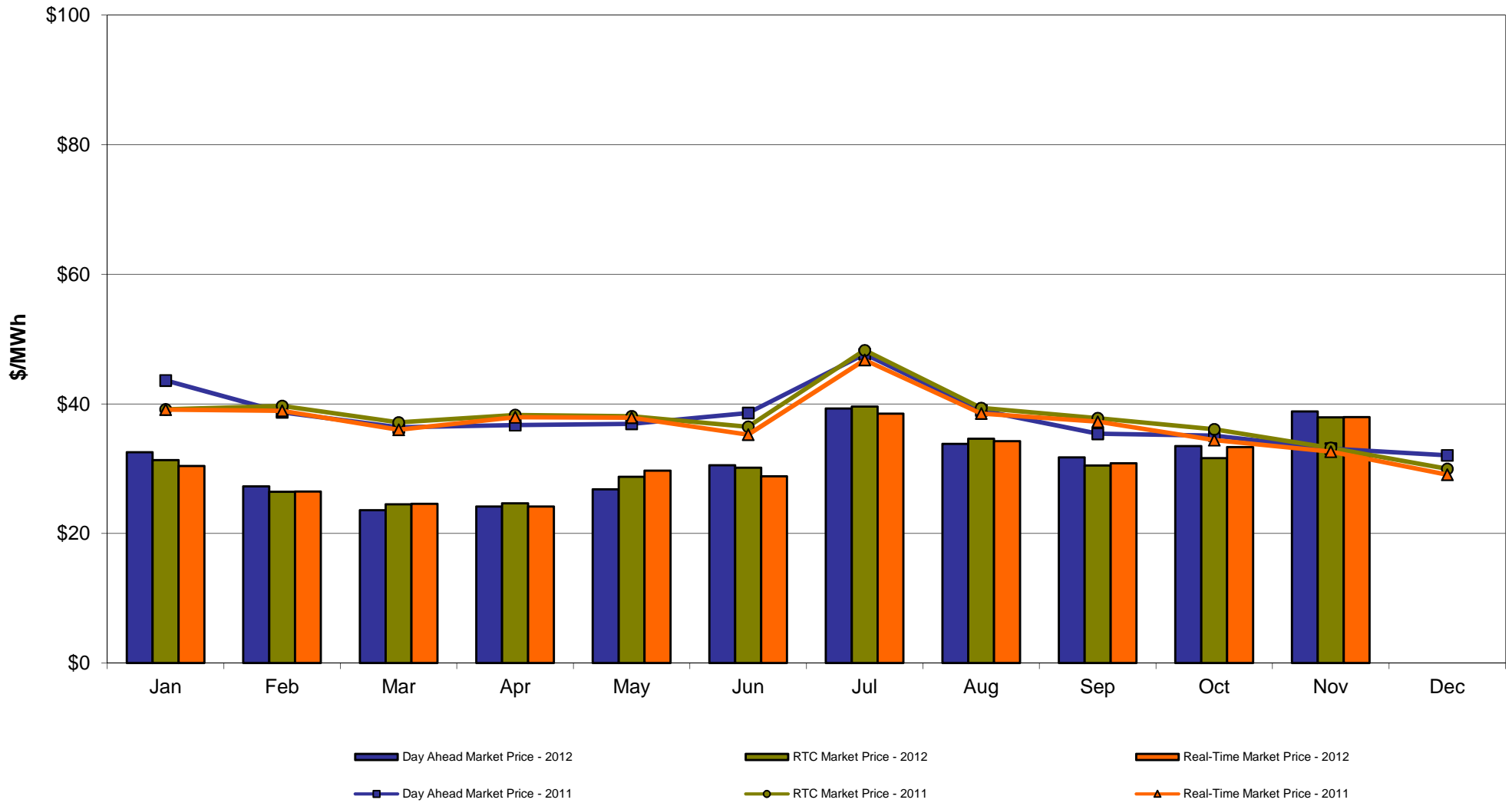


**November 2012 Zonal LBMP Statistics for NYISO (\$/MWh)**

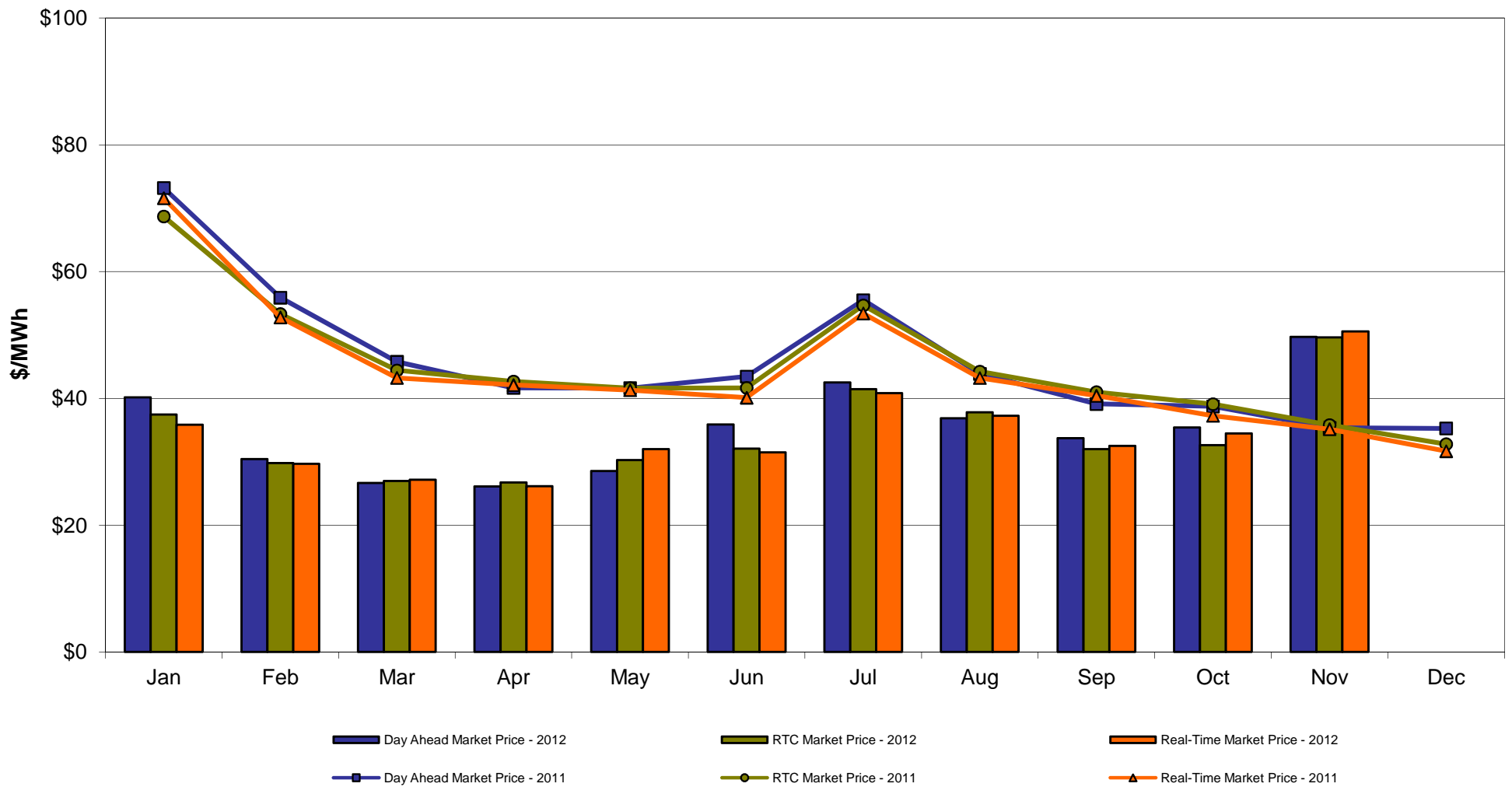
	<u>WEST</u> <u>Zone A</u>	<u>GENESEE</u> <u>Zone B</u>	<u>NORTH</u> <u>Zone D</u>	<u>CENTRAL</u> <u>Zone C</u>	<u>MOHAWK</u> <u>VALLEY</u> <u>Zone E</u>	<u>CAPITAL</u> <u>Zone F</u>	<u>HUDSON</u> <u>VALLEY</u> <u>Zone G</u>	<u>MILLWOOD</u> <u>Zone H</u>	<u>DUNWOODIE</u> <u>Zone I</u>	<u>NEW YORK</u> <u>CITY</u> <u>Zone J</u>	<u>LONG</u> <u>ISLAND</u> <u>Zone K</u>
<b>DAY AHEAD LBMP</b>											
Unweighted Price *	38.81	42.26	40.33	42.83	43.69	49.72	49.44	49.45	49.43	50.34	52.88
Standard Deviation	8.34	11.66	11.50	11.42	11.82	14.58	13.07	13.13	13.05	12.59	14.16
<b>RTC LBMP</b>											
Unweighted Price *	37.91	41.38	39.23	41.97	42.97	49.64	48.69	48.72	48.59	50.02	52.41
Standard Deviation	25.87	34.27	33.36	33.40	34.14	35.95	34.76	34.75	34.60	35.50	38.95
<b>REAL TIME LBMP</b>											
Unweighted Price *	37.97	41.79	39.25	42.31	43.30	50.57	49.45	49.48	49.36	50.63	54.33
Standard Deviation	17.91	30.23	29.71	28.69	29.57	30.40	28.89	28.91	28.77	28.85	37.79
	<u>ONTARIO</u> <u>IESO</u> <u>Zone O</u>	<u>HYDRO</u> <u>QUEBEC</u> <u>(Wheel)</u> <u>Zone M</u>	<u>HYDRO</u> <u>QUEBEC</u> <u>(Import/Export)</u> <u>Zone M</u>	<u>PJM</u> <u>Zone P</u>	<u>NEW</u> <u>ENGLAND</u> <u>Zone N</u>	<u>CROSS</u> <u>SOUND</u> <u>CABLE</u> <u>Controllable</u> <u>Line</u>	<u>NORTHPORT-</u> <u>NORWALK</u> <u>Controllable</u> <u>Line</u>	<u>NEPTUNE</u> <u>Controllable</u> <u>Line</u>	<u>LINDEN VFT</u> <u>Controllable</u> <u>Line</u>	<u>Dennison</u> <u>Controllable</u> <u>Line</u>	
<b>DAY AHEAD LBMP</b>											
Unweighted Price *	38.20	40.37	39.57	43.06	51.12	52.12	51.59	51.61	50.42	39.48	
Standard Deviation	8.10	11.66	11.64	9.55	15.50	14.01	13.81	13.67	12.73	11.22	
<b>RTC LBMP</b>											
Unweighted Price *	34.19	33.75	33.12	38.68	45.39	47.59	46.96	47.62	51.42	35.84	
Standard Deviation	14.49	19.33	18.82	15.87	20.29	23.50	22.93	23.49	36.69	18.47	
<b>REAL TIME LBMP</b>											
Unweighted Price *	36.50	36.98	36.35	42.29	54.00	52.87	50.75	52.78	54.72	38.61	
Standard Deviation	17.23	28.90	28.67	21.05	26.18	36.63	26.58	36.90	36.97	27.86	

\* Straight LBMP averages

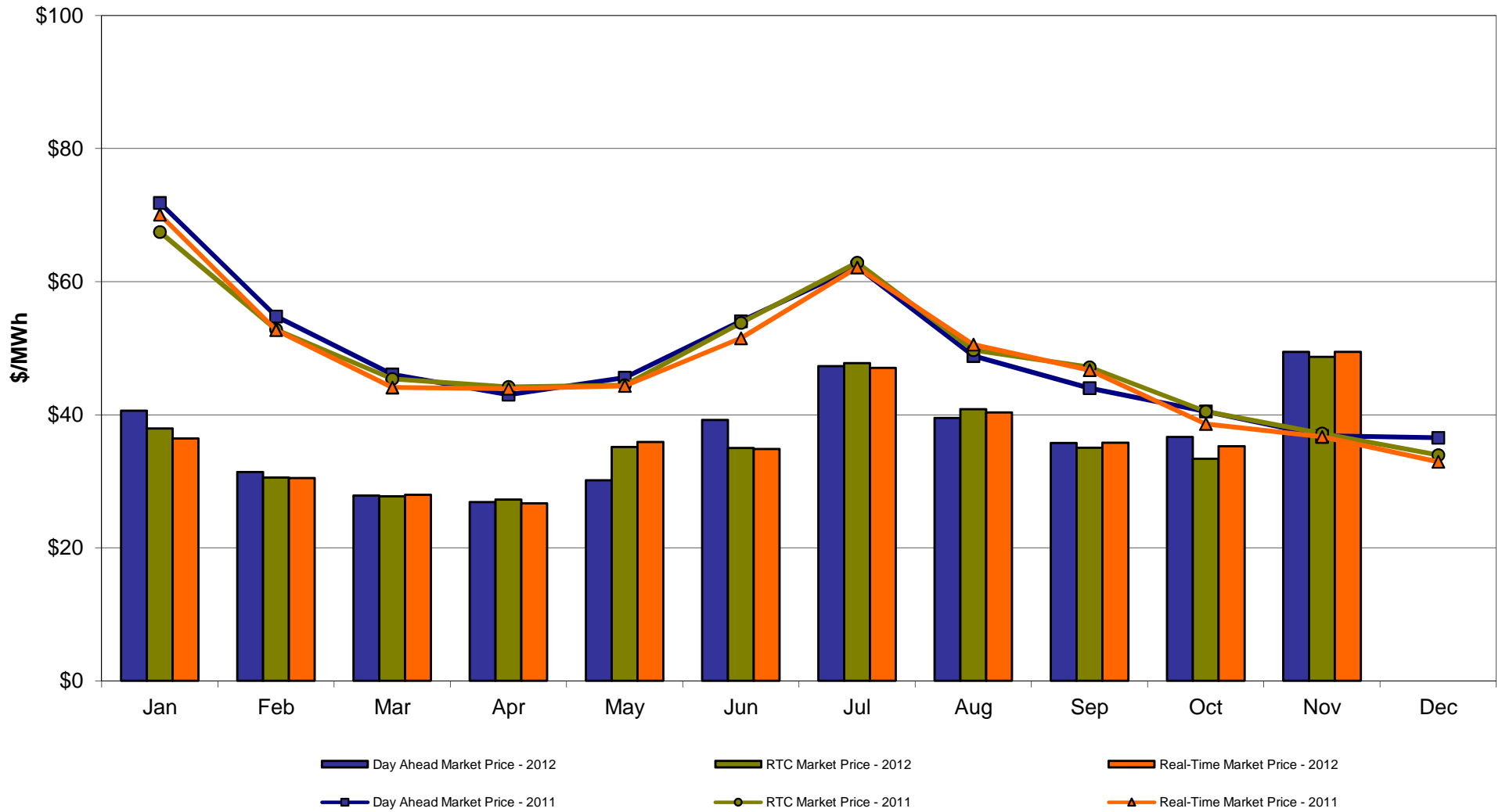
**West Zone A  
Monthly Average LBMP Prices 2011 - 2012**



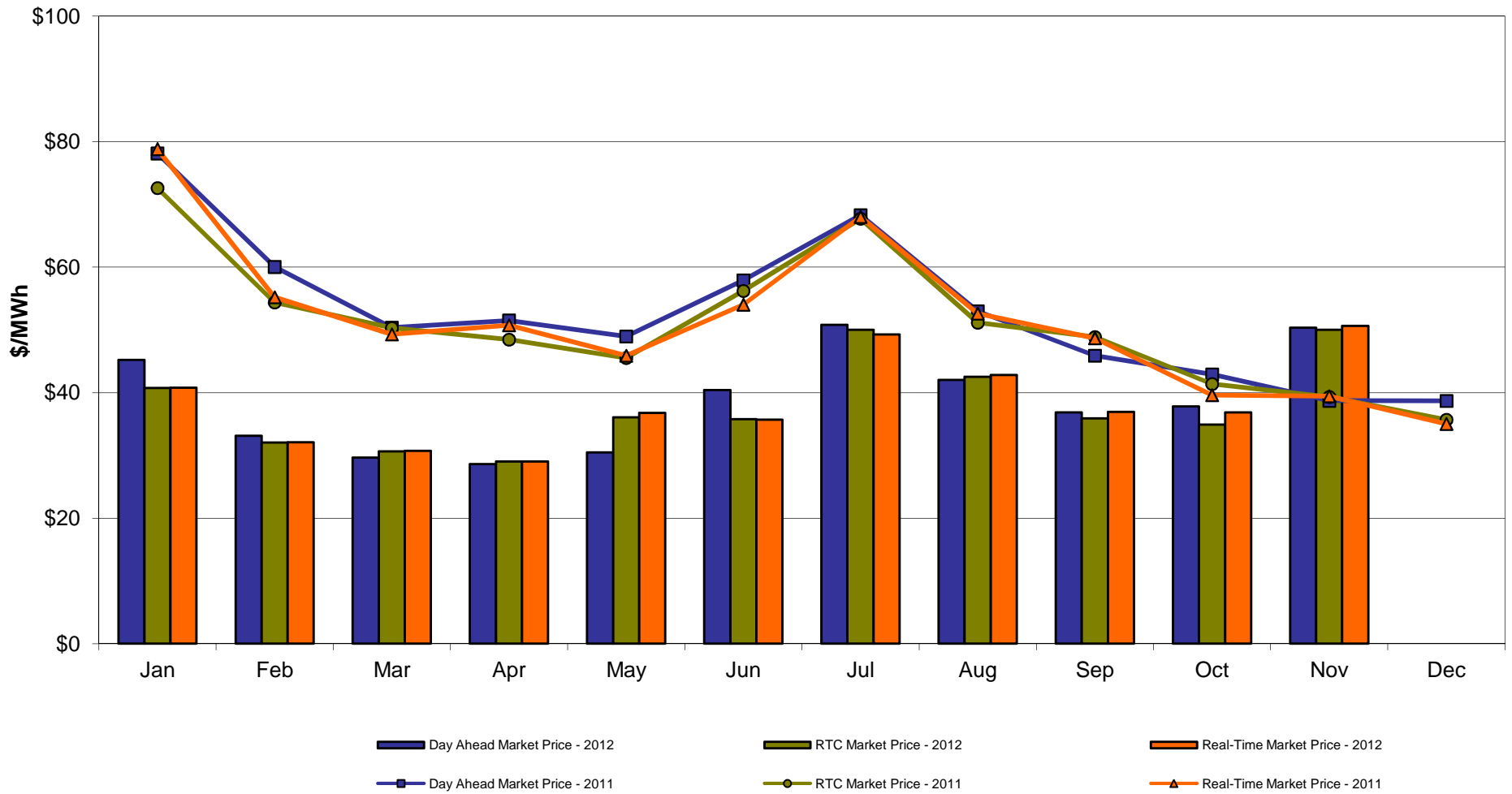
## Capital Zone F Monthly Average LBMP Prices 2011 - 2012



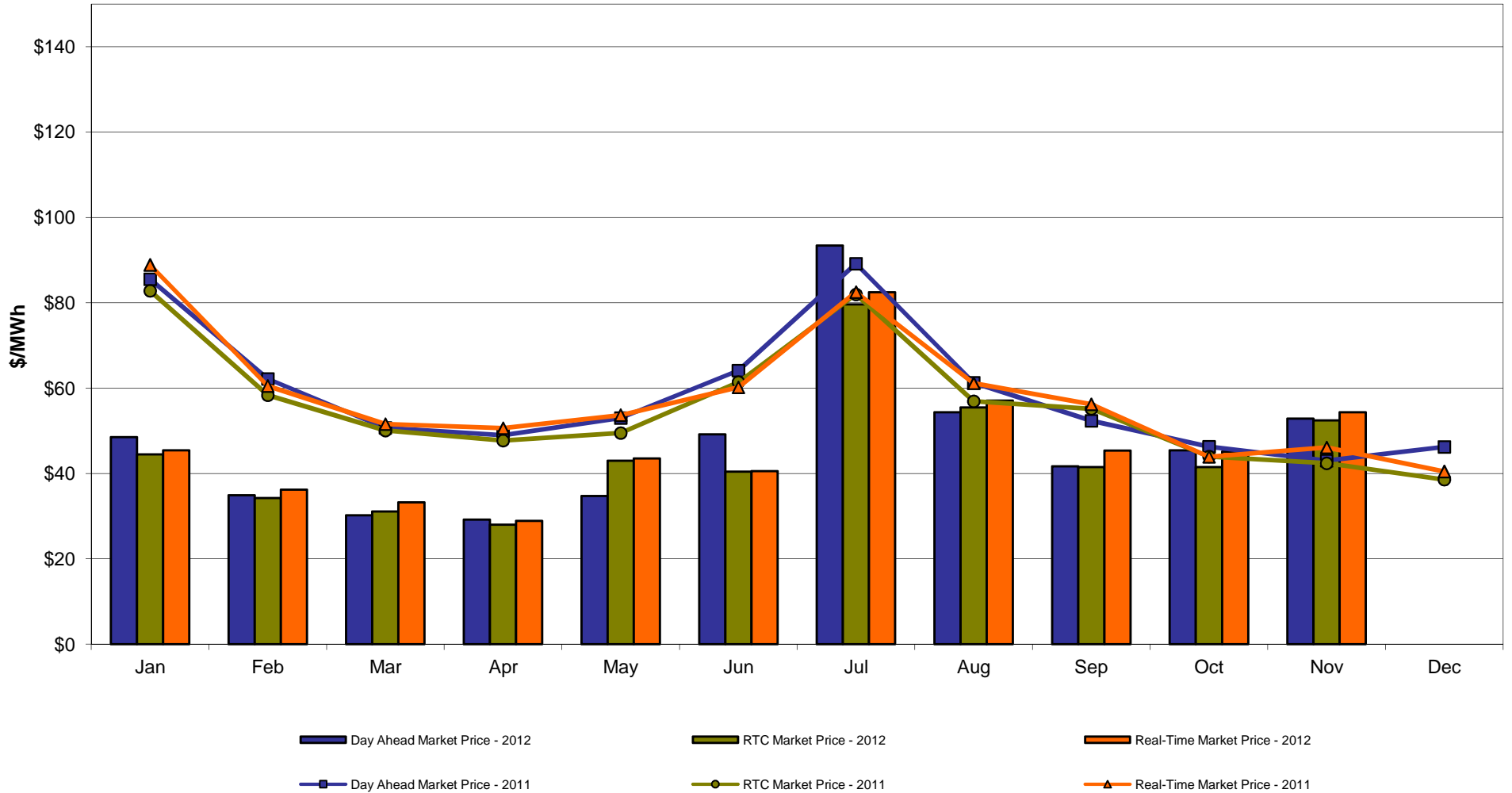
## Hudson Valley Zone G Monthly Average LBMP Prices 2011 - 2012



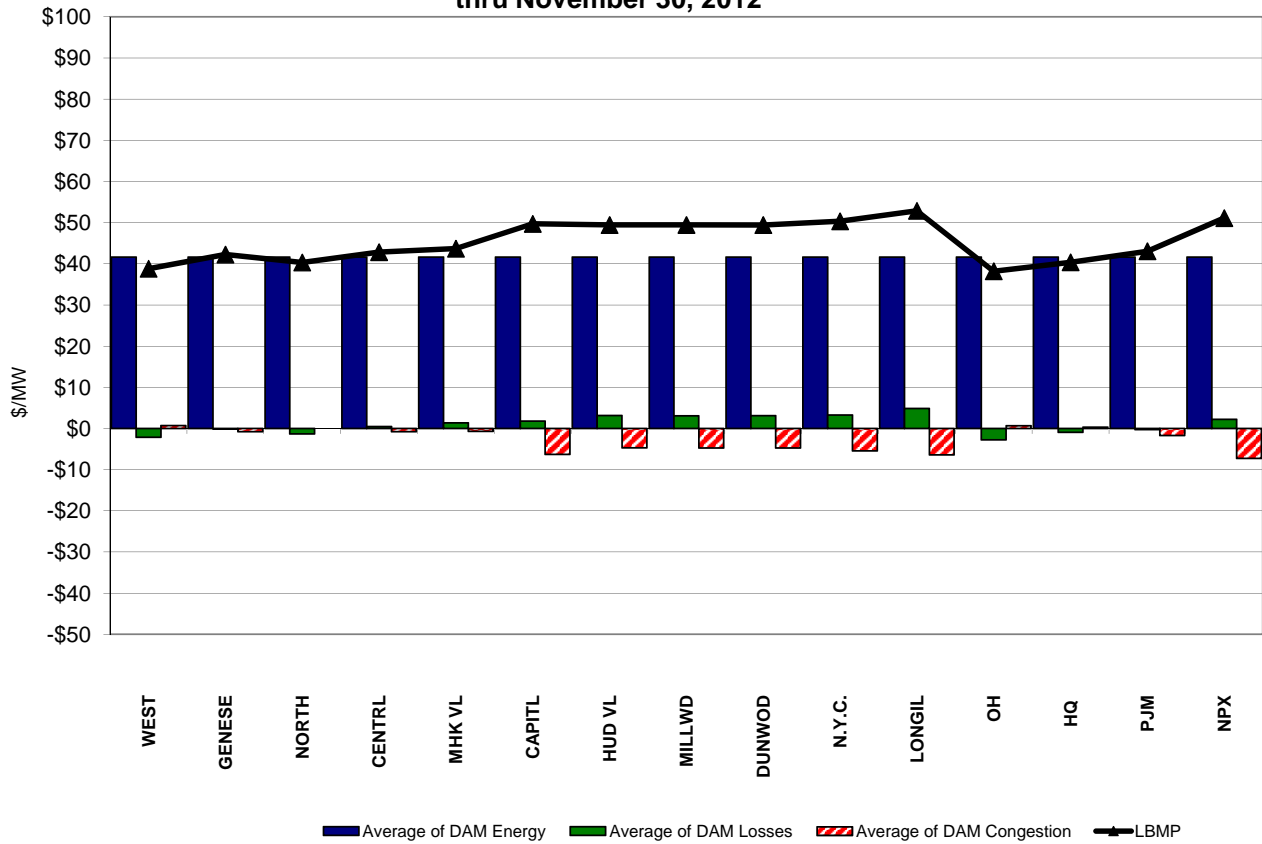
## NYC Zone J Monthly Average LBMP Prices 2011 - 2012



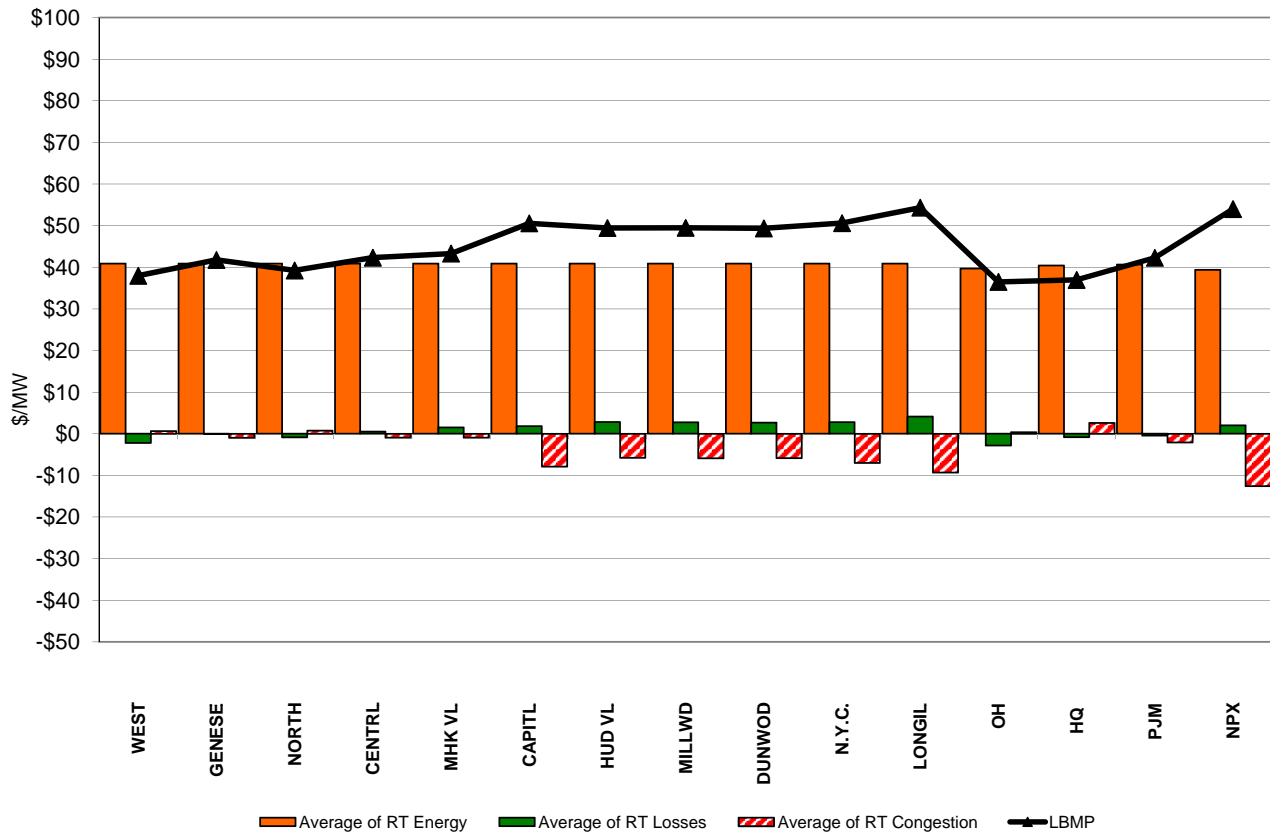
## Long Island Zone K Monthly Average LBMP Prices 2011 - 2012



**DAM Zonal Unweighted Monthly Average LBMP Components  
thru November 30, 2012**



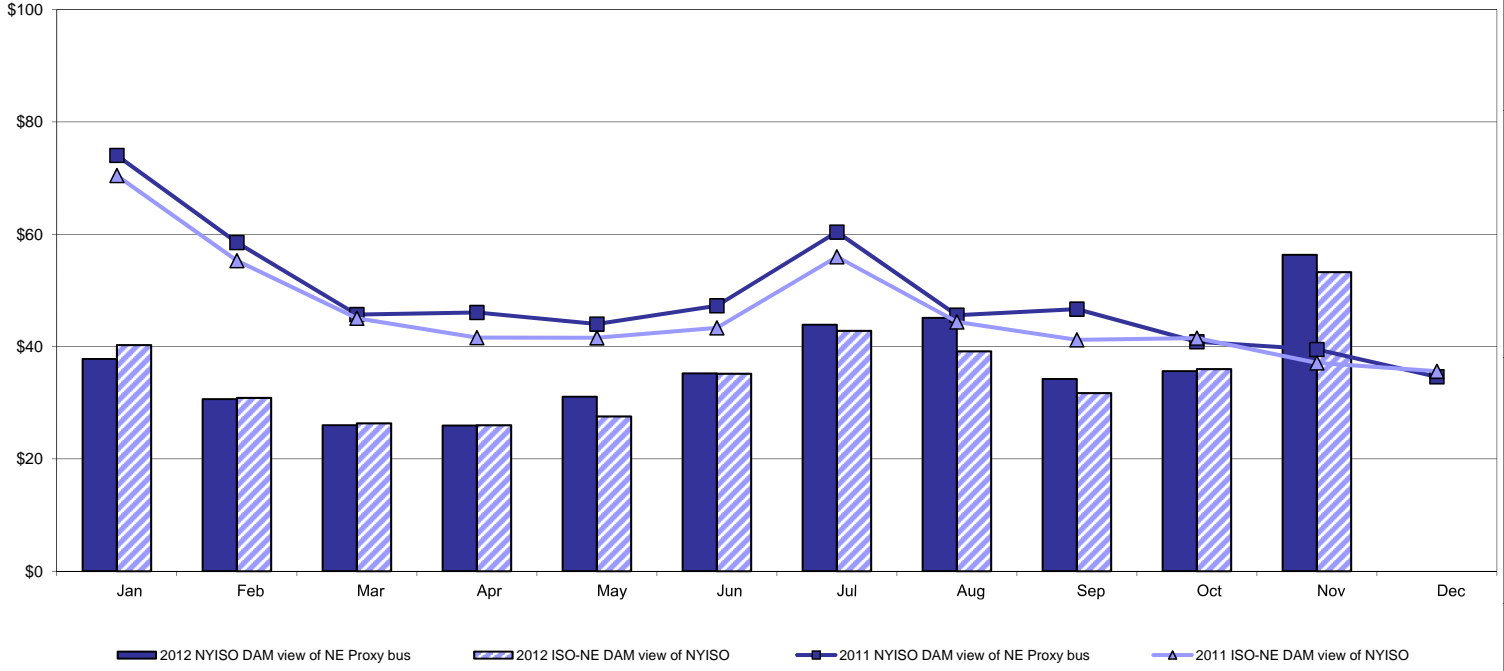
**RT Zonal Unweighted Monthly Average LBMP Components  
thru November 30, 2012**



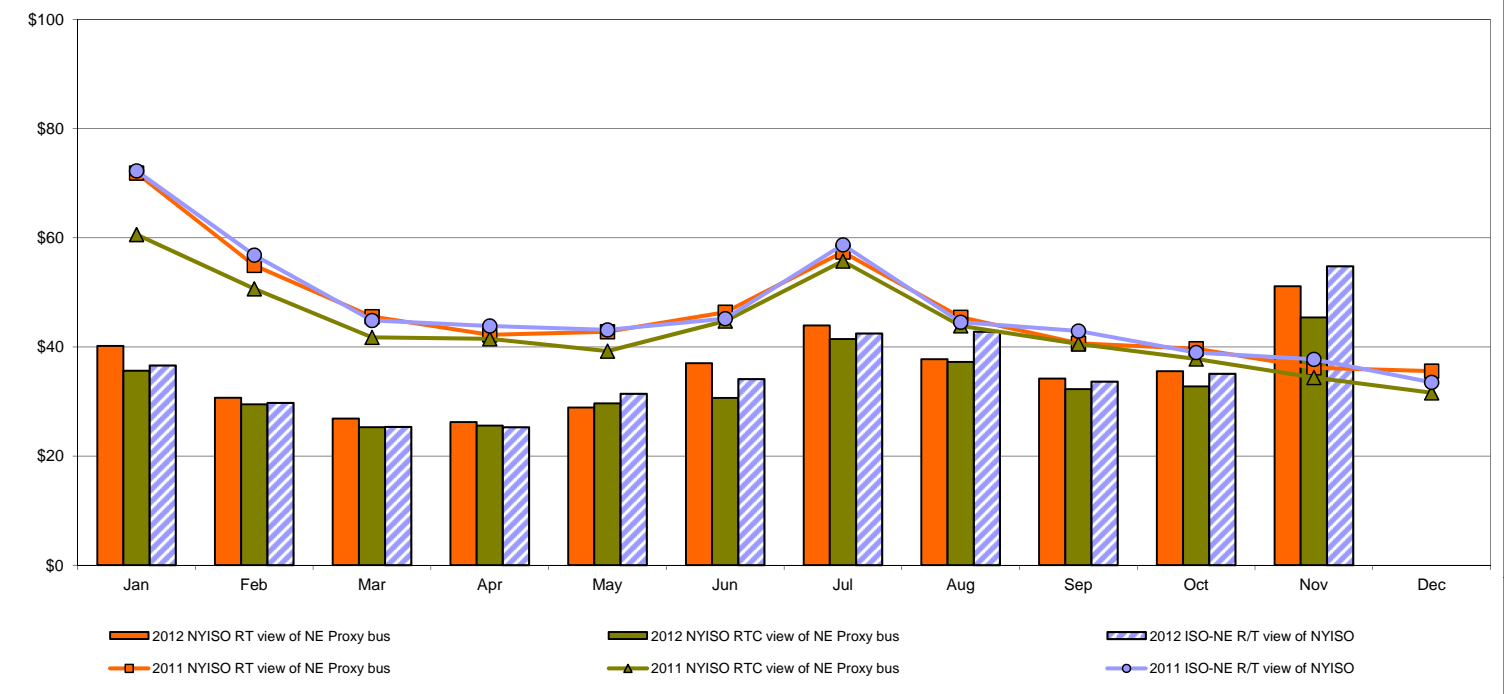


# External Comparison ISO-New England

## Day Ahead Market External Zone Comparison: ISO-NE (\$/MWh)

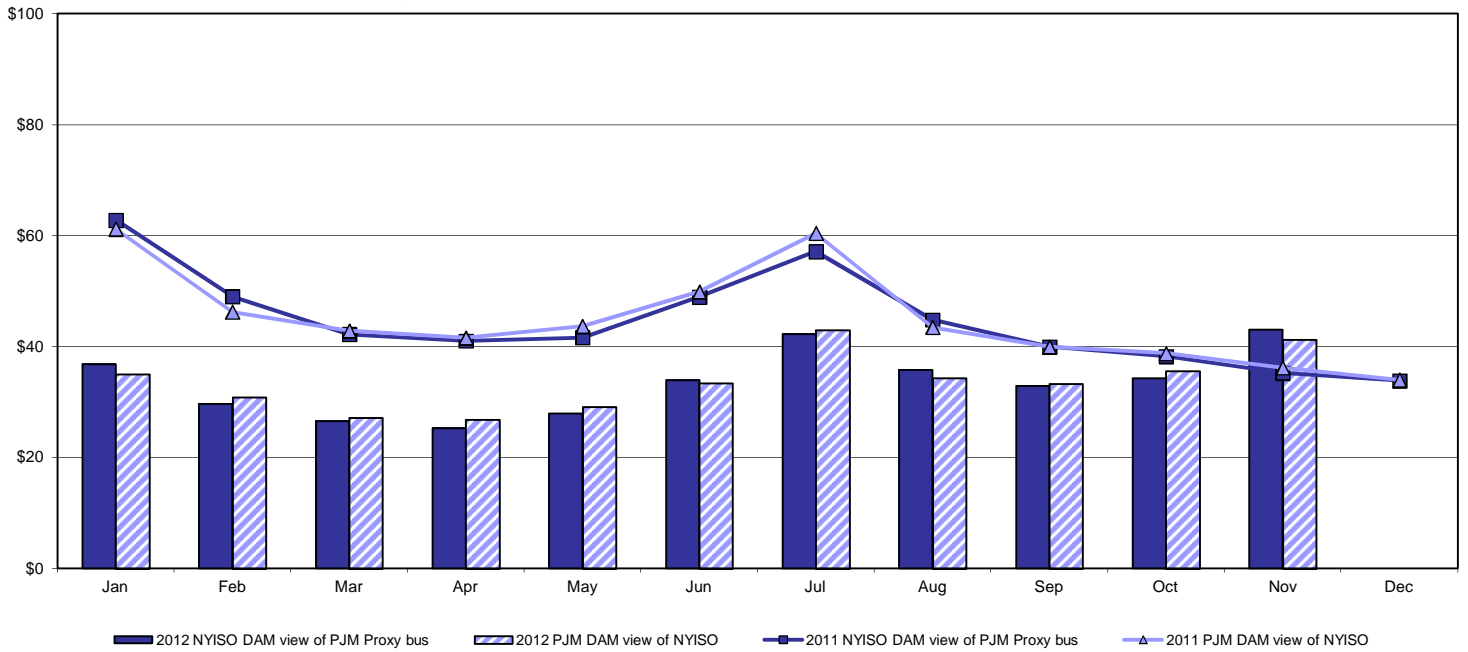


## Real Time Market External Zone Comparison: ISO-NE (\$/MWh)

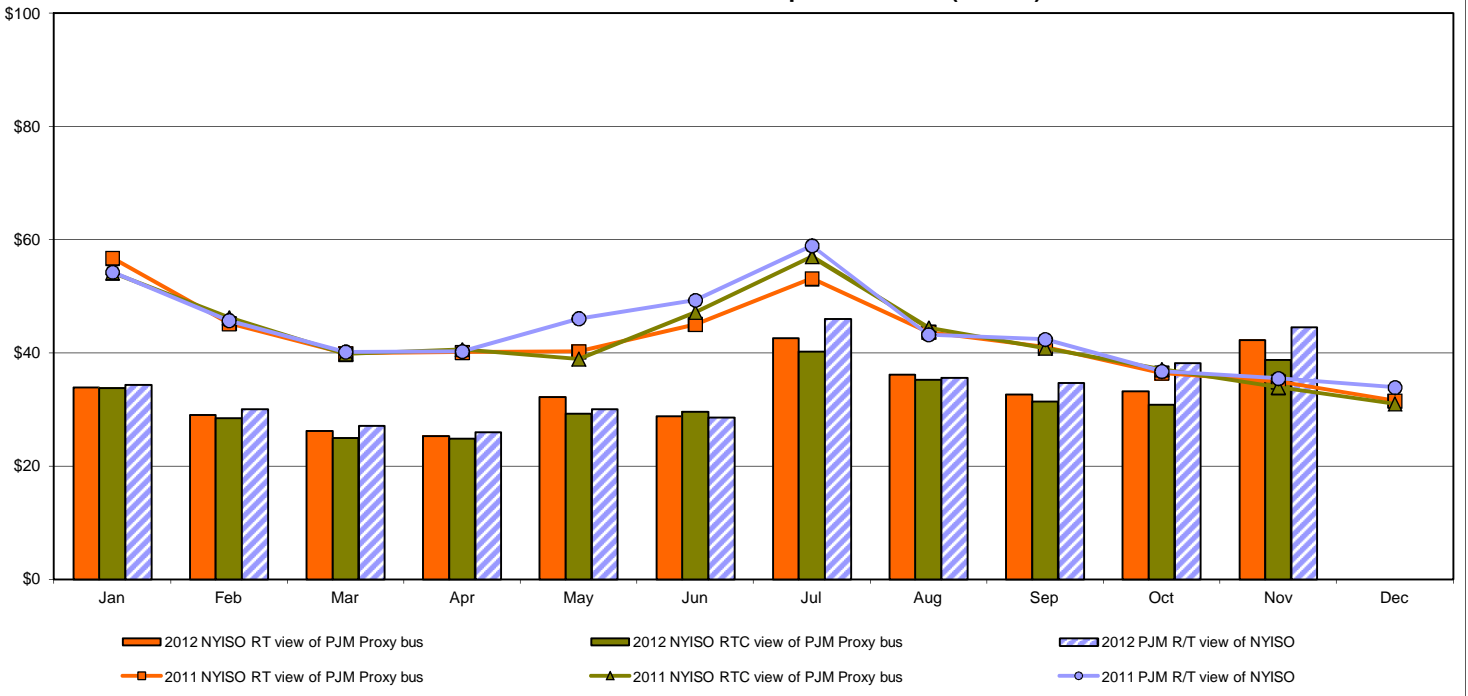


# External Comparison PJM

## Day Ahead Market External Zone Comparison - PJM (\$/MWh)

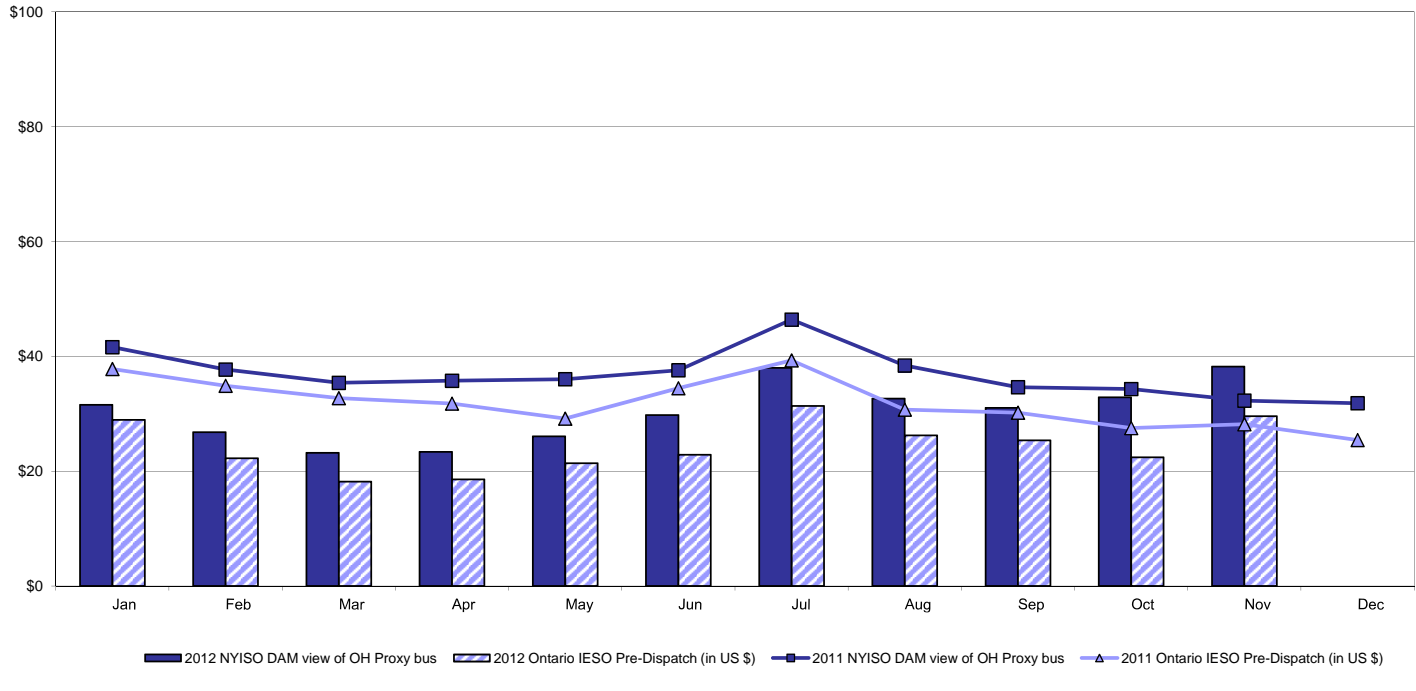


## Real Time Market External Zone Comparison - PJM (\$/MWh)

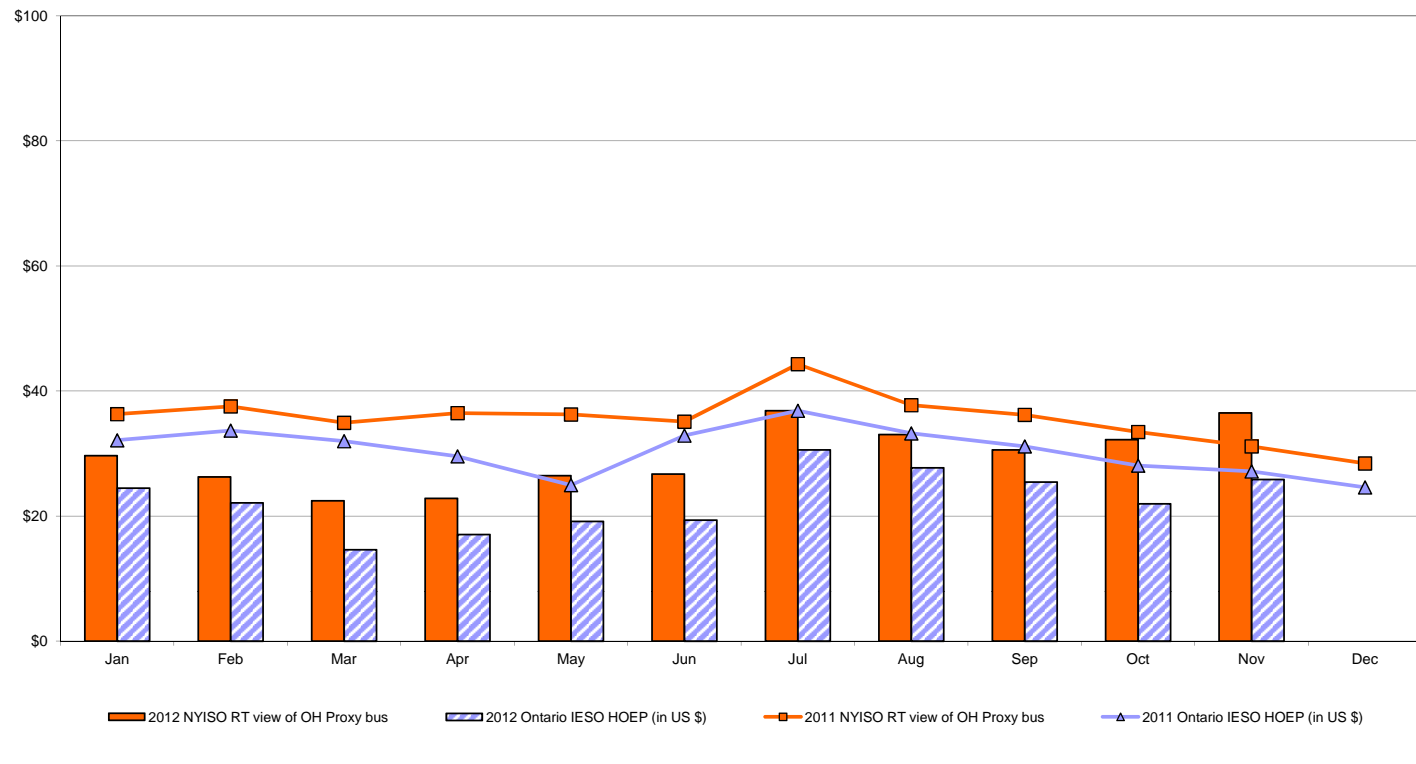


# External Comparison Ontario IESO

**Day Ahead Market External Zone Comparison - Ontario IESO (\$/MWh)**

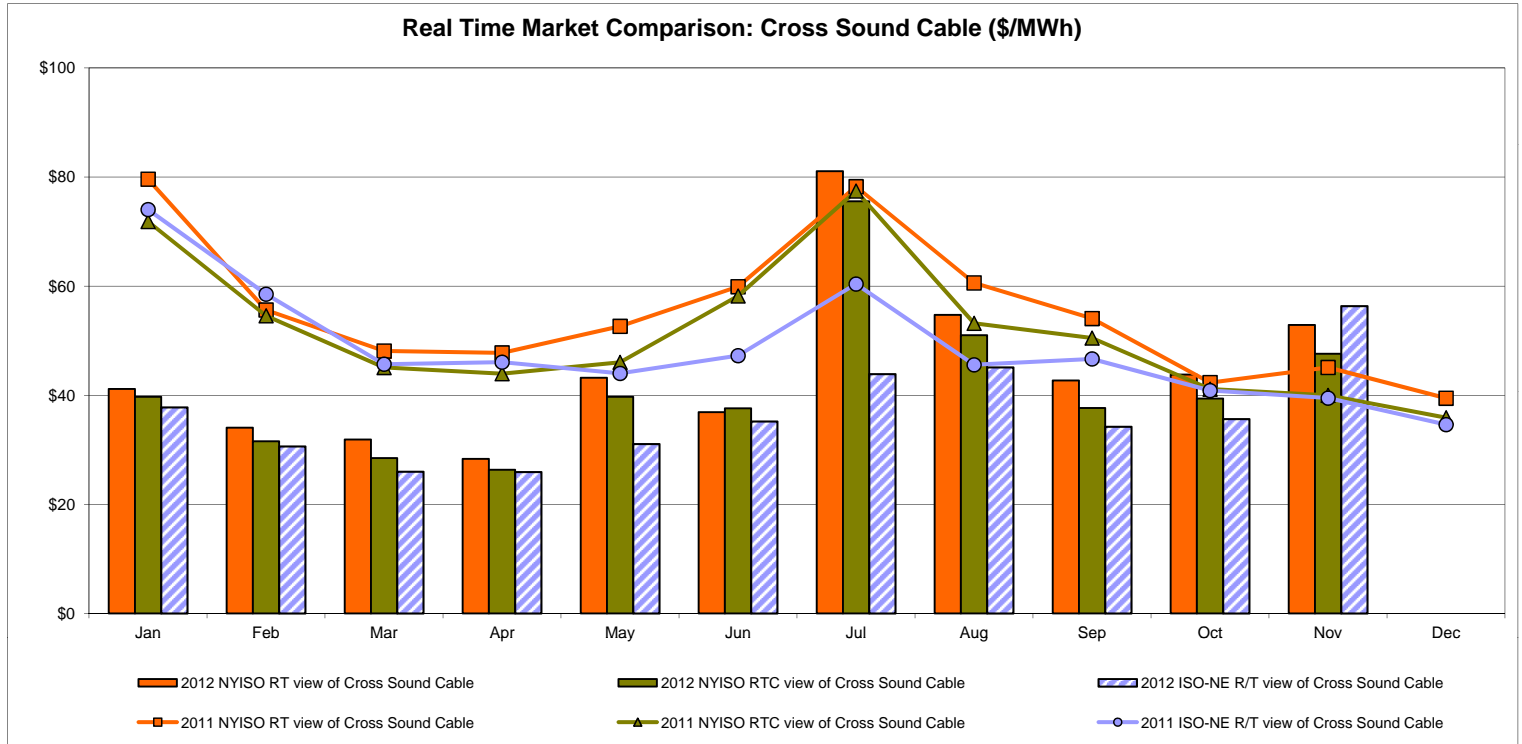
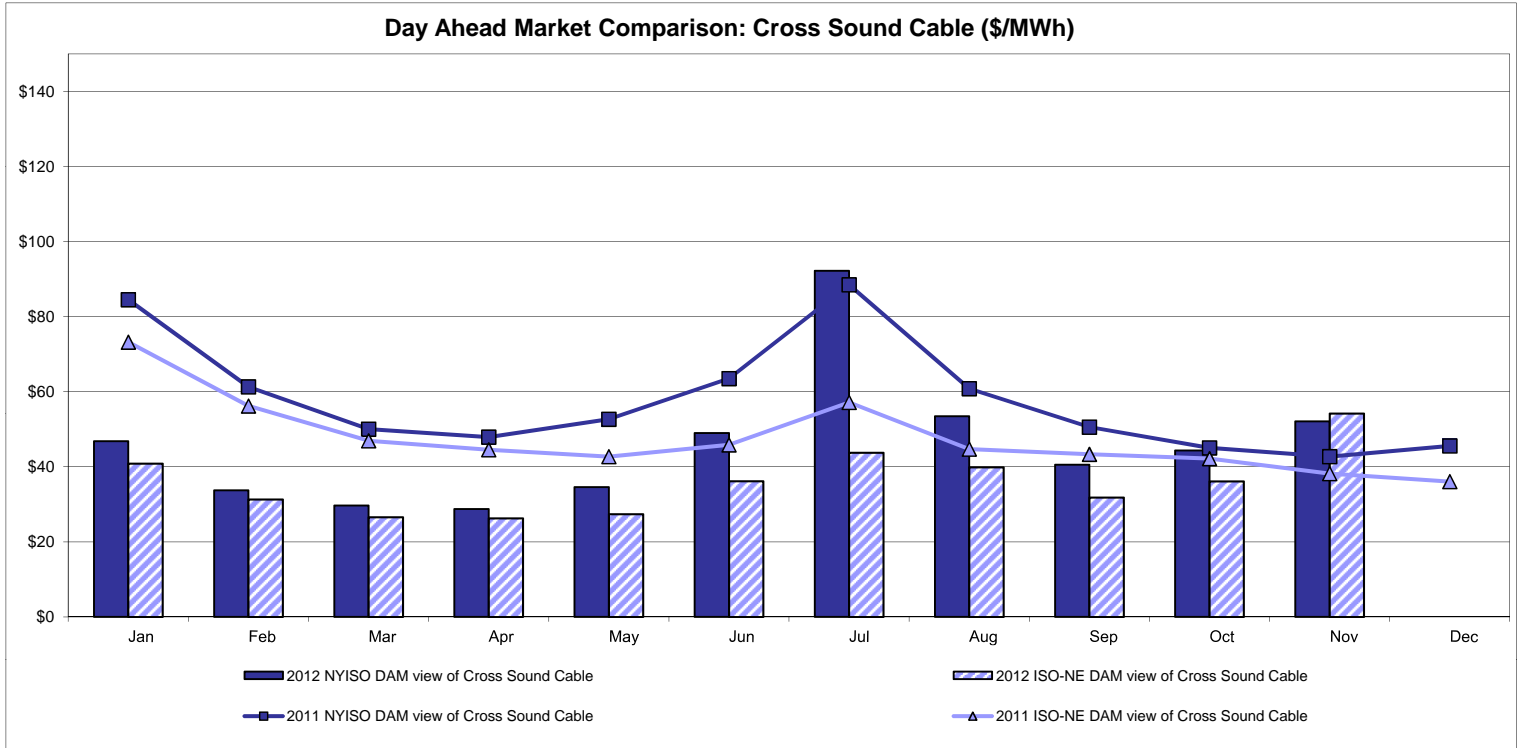


**Real Time Market External Zone Comparison - Ontario IESO (\$/MWh)**



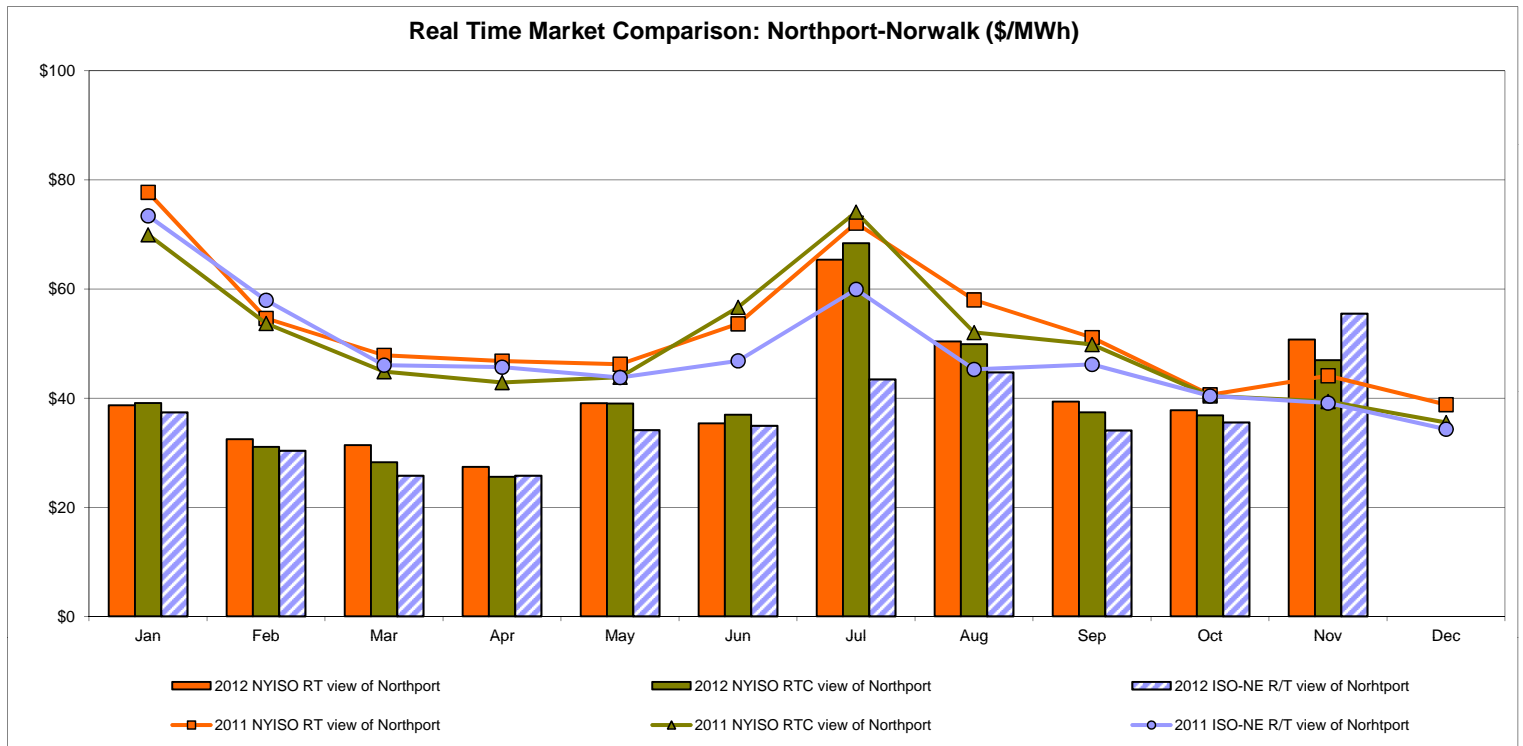
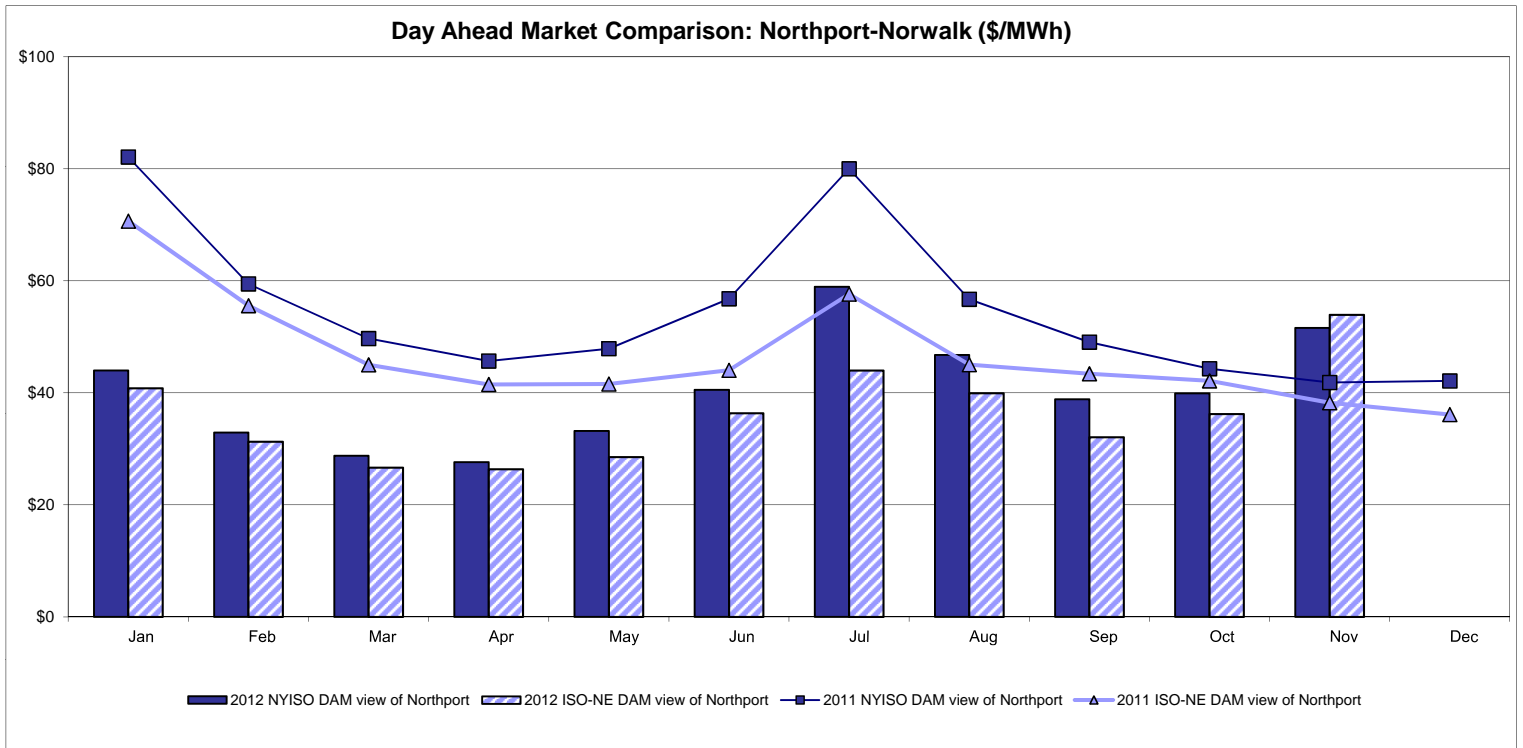
Notes: Exchange factor used for November 2012 was 1.00 to US \$  
 HOEP: Hourly Ontario Energy Price  
 Pre-Dispatch: Projected Energy Price

# External Controllable Line: Cross Sound Cable (New England)



Note:  
 ISO-NE Forecast is an advisory posting @ 18:00 day before.  
 The DAM and R/T prices at the Shorham 13899 interface are used for ISO-NE.  
 The DAM and R/T prices at the CSC interface are used for NYISO.

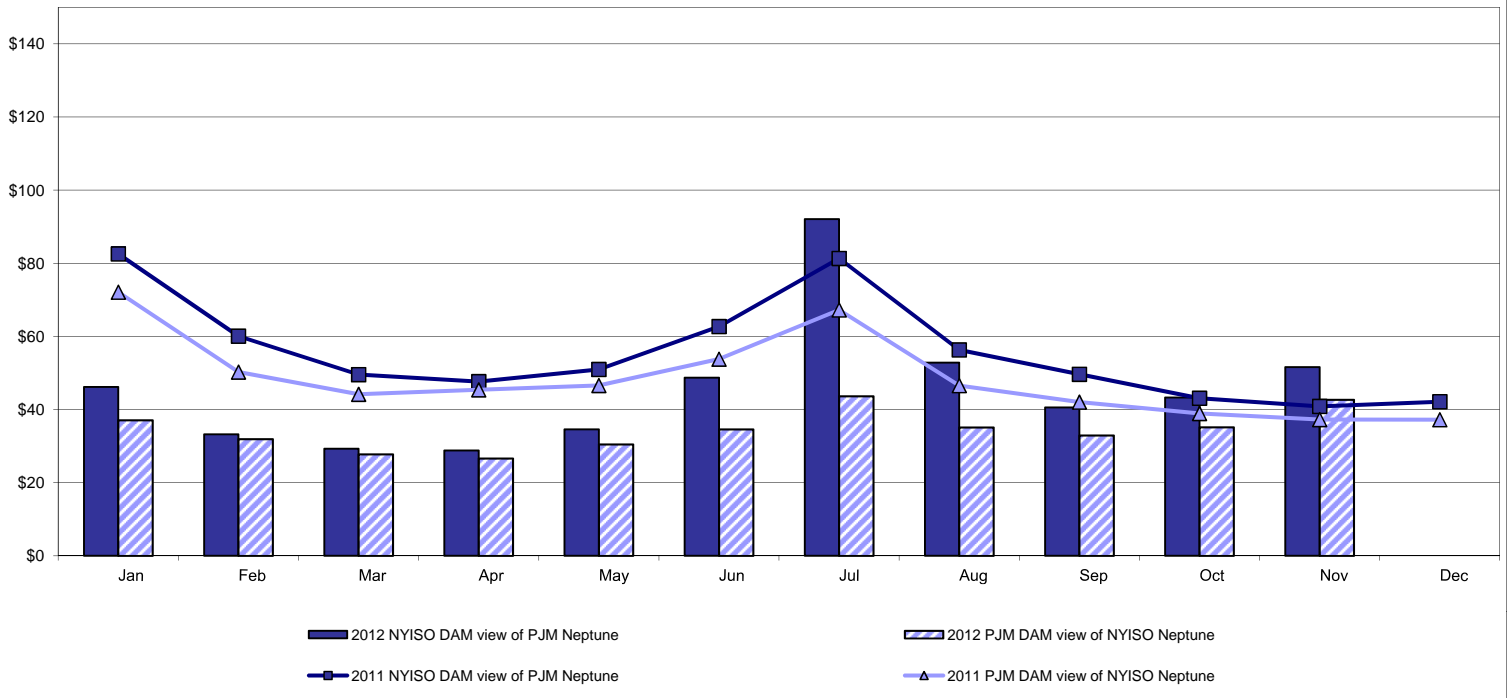
# External Controllable Line: Northport - Norwalk (New England)



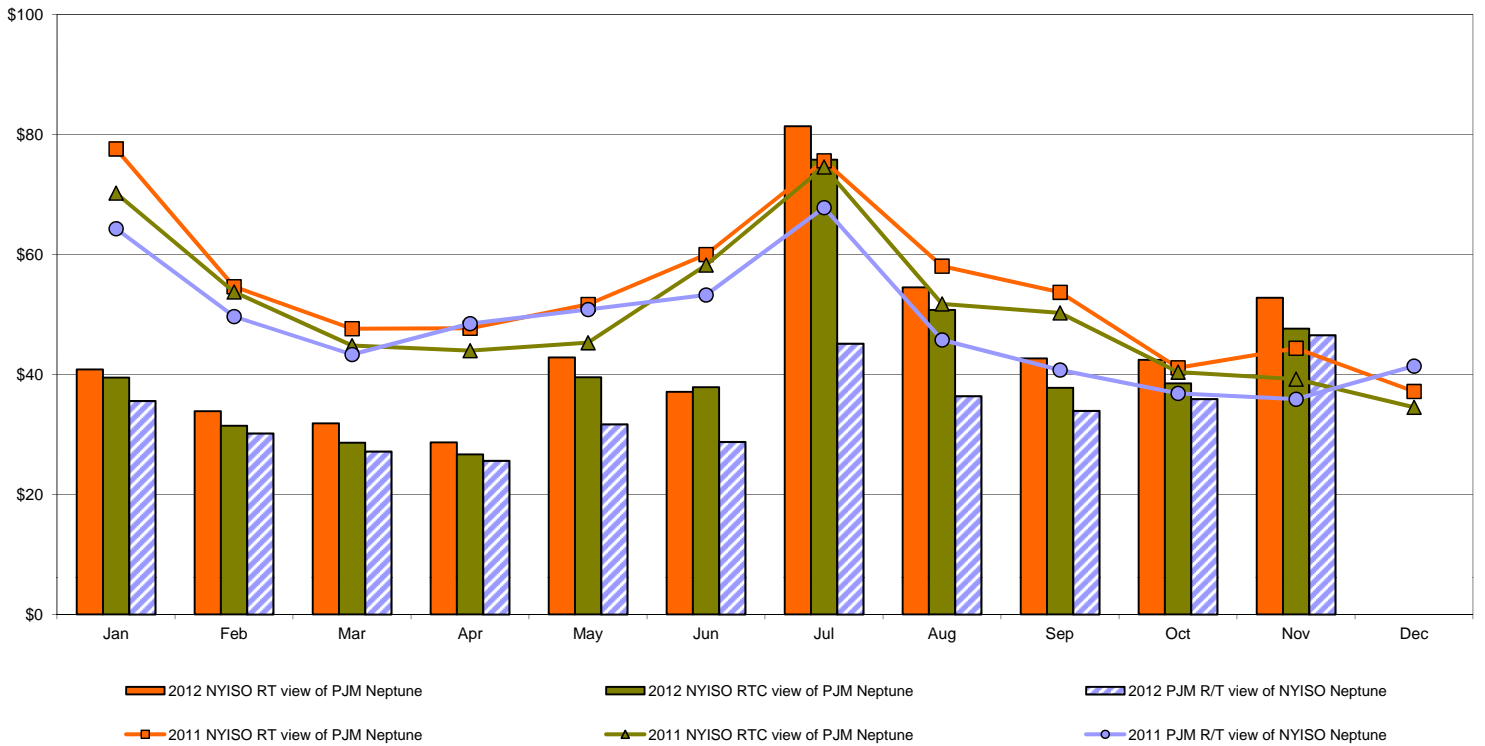
Note:  
 ISO-NE Forecast is an advisory posting @ 18:00 day before.  
 The DAM and R/T prices at the Northport 138 interface are used for ISO-NE.  
 The DAM and R/T prices at the 1385 interface are used for NYISO.

## External Controllable Line: Neptune (PJM)

### Day Ahead Market Comparison: Neptune (\$/MWh)

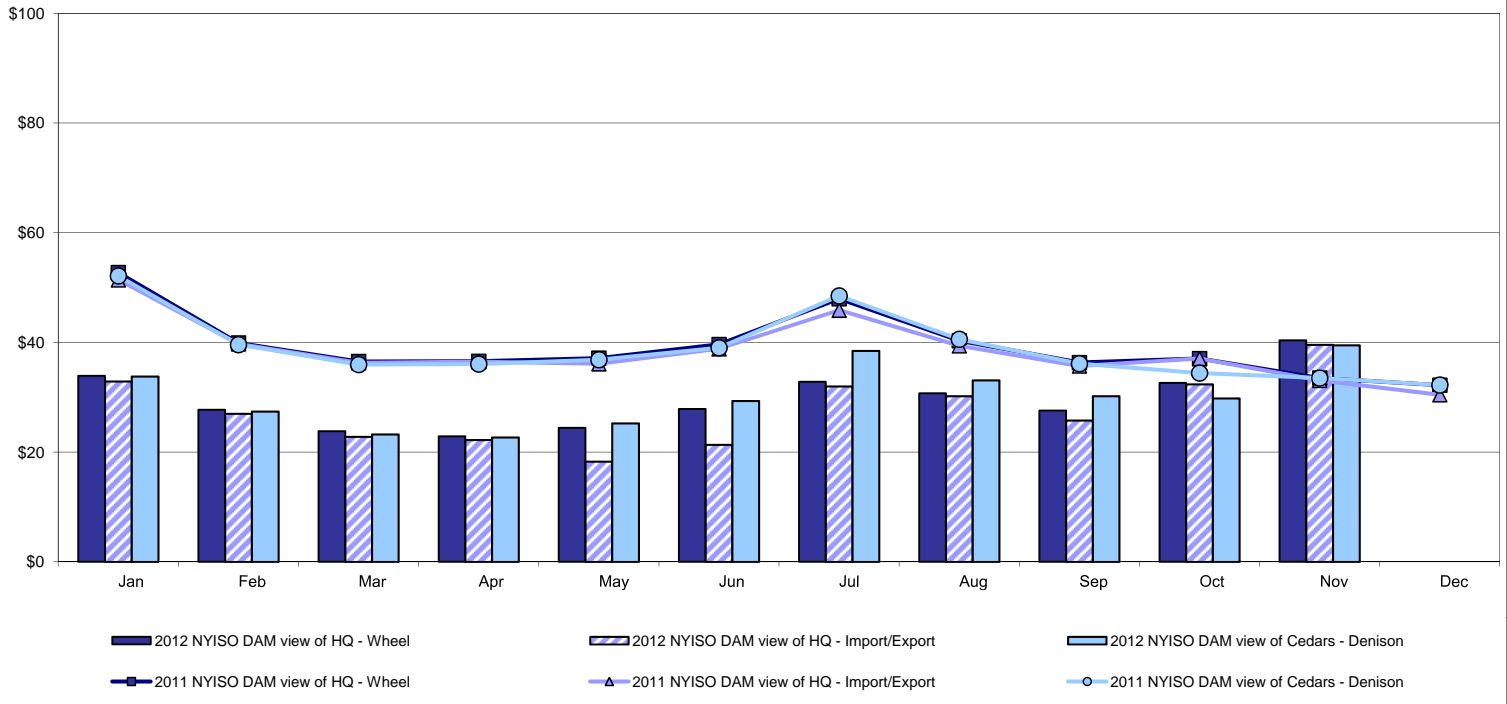


### Real Time Market Comparison: Neptune (\$/MWh)

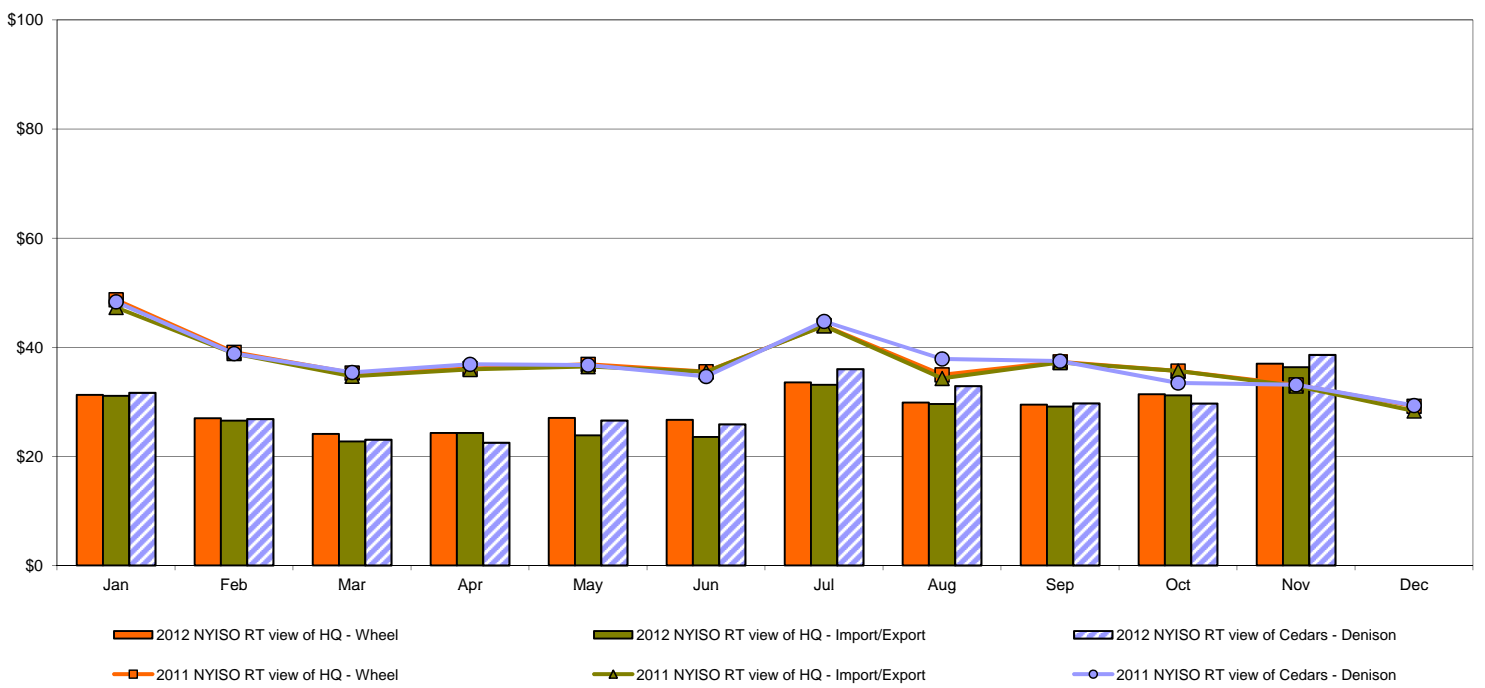


# External Comparison Hydro-Quebec

## Day Ahead Market External Zone Comparison - HQ (\$/MWh)

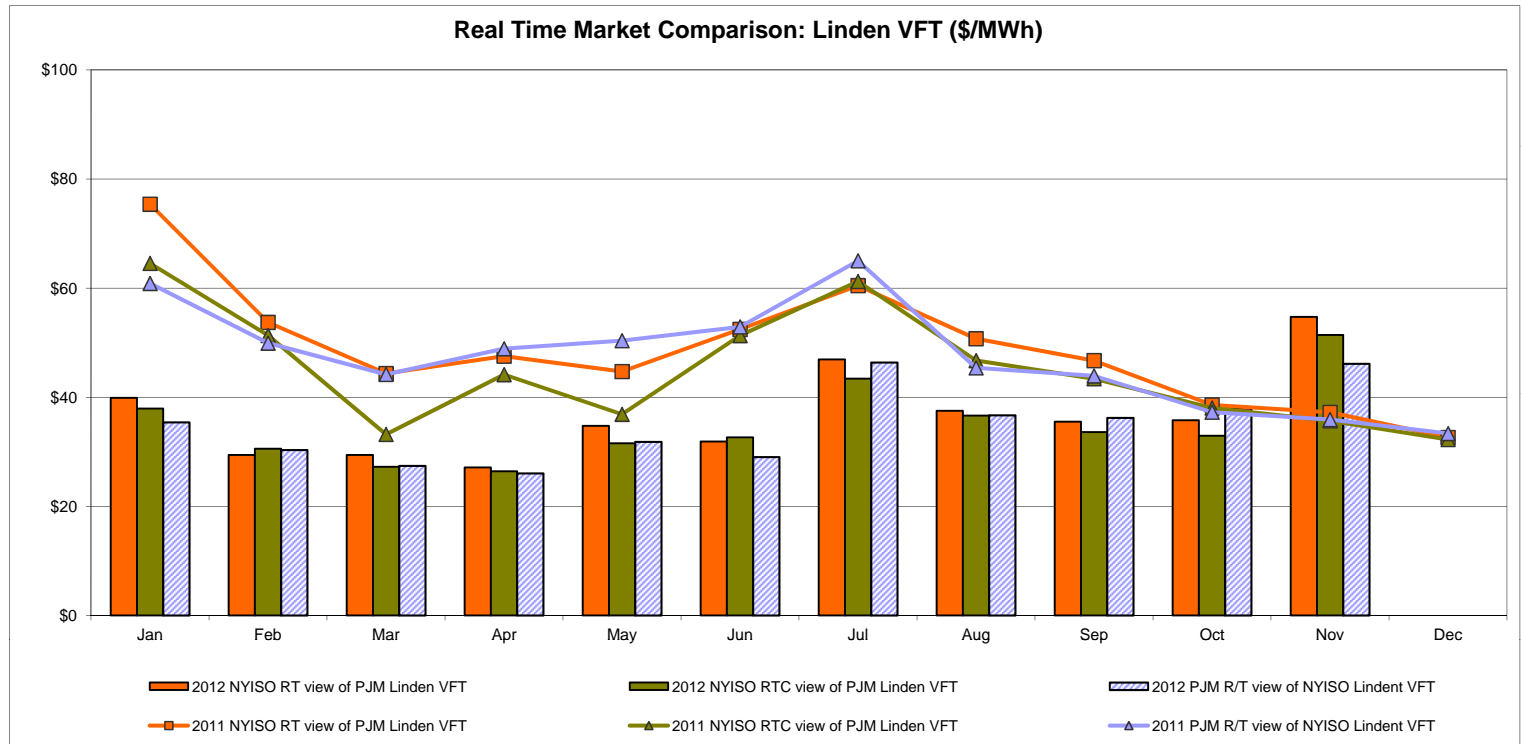
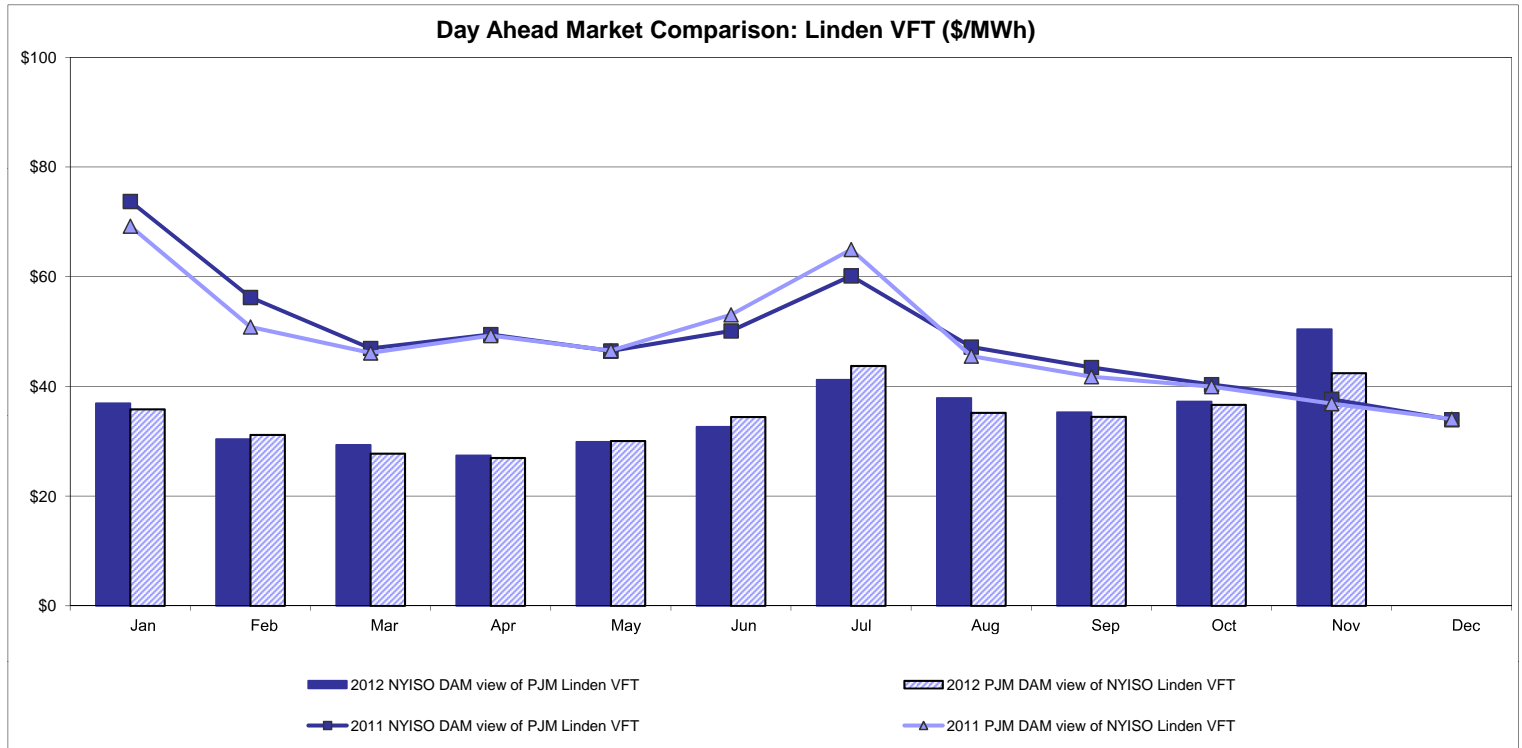


## Real Time Market External Zone Comparison - HQ (\$/MWh)



Note:  
Hydro-Quebec Prices are unavailable.

# External Controllable Line: Linden VFT (PJM)



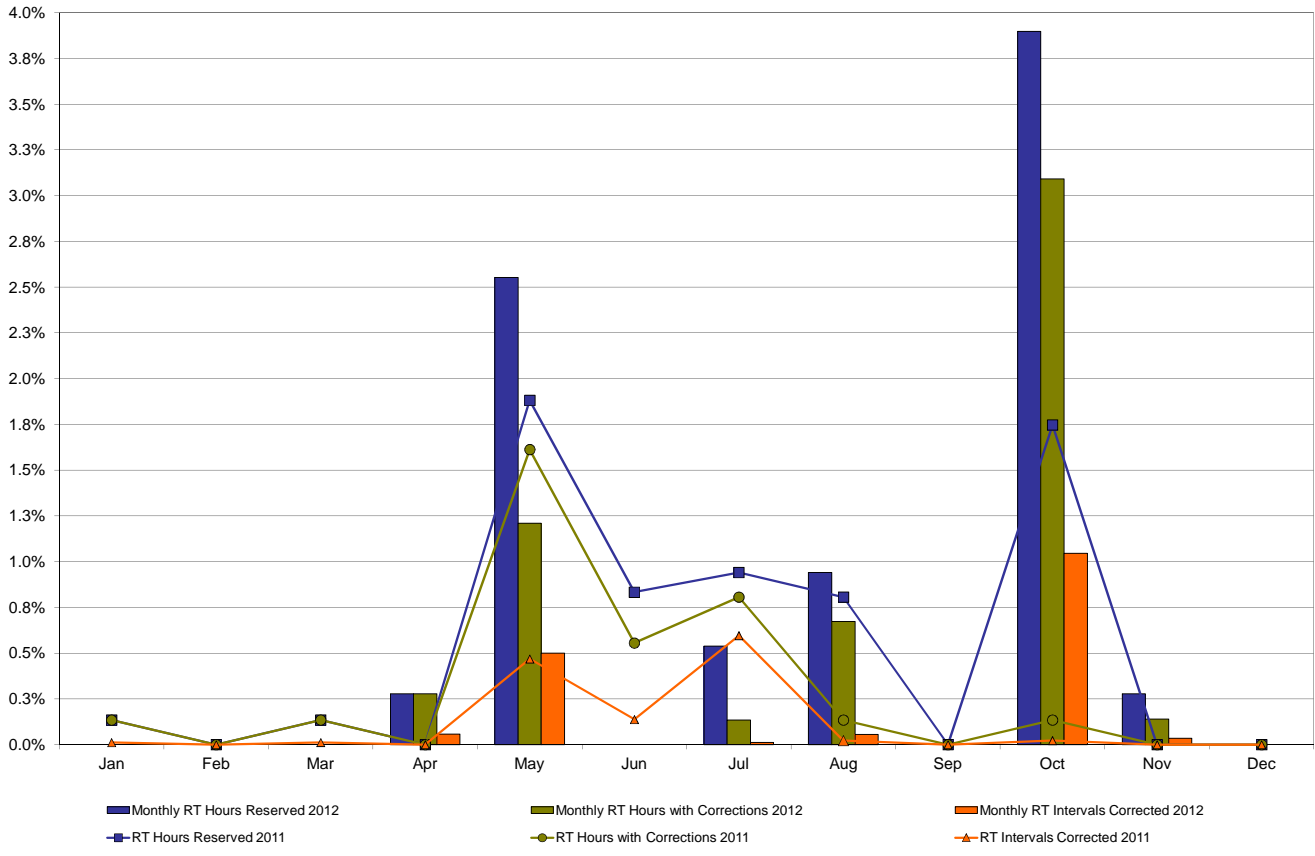


**NYISO Real Time Price Correction Statistics**

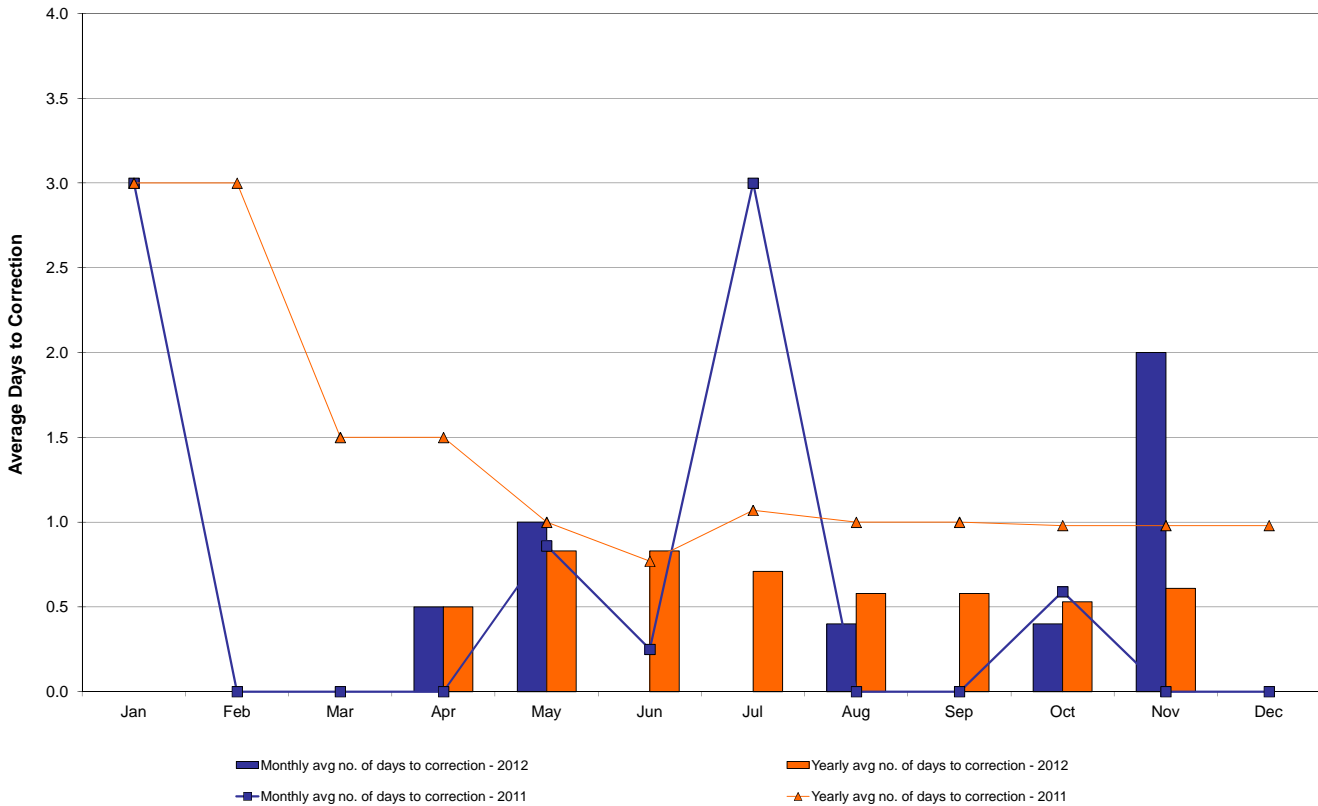
<b>2012</b>		<u>January</u>	<u>February</u>	<u>March</u>	<u>April</u>	<u>May</u>	<u>June</u>	<u>July</u>	<u>August</u>	<u>September</u>	<u>October</u>	<u>November</u>	<u>December</u>
<b>Hour Corrections</b>													
Number of hours with corrections	in the month	0	0	0	2	9	0	1	5	0	23	1	
Number of hours	in the month	744	696	743	720	744	720	744	744	720	744	721	
% of hours with corrections	in the month	0.00%	0.00%	0.00%	0.28%	1.21%	0.00%	0.13%	0.67%	0.00%	3.09%	0.14%	
% of hours with corrections	year-to-date	0.00%	0.00%	0.00%	0.07%	0.30%	0.25%	0.23%	0.29%	0.26%	0.55%	0.51%	
<b>Interval Corrections</b>													
Number of intervals corrected	in the month	0	0	0	5	45	0	1	5	0	94	3	
Number of intervals	in the month	9,025	8,399	8,977	8,716	9,013	8,786	9,100	9,044	8,724	8,987	8,856	
% of intervals corrected	in the month	0.00%	0.00%	0.00%	0.06%	0.50%	0.00%	0.01%	0.06%	0.00%	1.05%	0.03%	
% of intervals corrected	year-to-date	0.00%	0.00%	0.00%	0.01%	0.11%	0.09%	0.08%	0.08%	0.07%	0.17%	0.16%	
<b>Hours Reserved</b>													
Number of hours reserved	in the month	0	0	0	2	19	0	4	7	0	29	2	
Number of hours	in the month	744	696	743	720	744	720	744	744	720	744	721	
% of hours reserved	in the month	0.00%	0.00%	0.00%	0.28%	2.55%	0.00%	0.54%	0.94%	0.00%	3.90%	0.28%	
% of hours reserved	year-to-date	0.00%	0.00%	0.00%	0.07%	0.58%	0.48%	0.49%	0.55%	0.49%	0.83%	0.78%	
<b>Days to Correction *</b>													
Avg. number of days to correction	in the month	0.00	0.00	0.00	0.50	1.00	0.00	0.00	0.40	0.00	0.40	2.00	
Avg. number of days to correction	year-to-date	0.00	0.00	0.00	0.50	0.83	0.83	0.71	0.58	0.58	0.53	0.61	
<b>Days Without Corrections</b>													
Days without corrections	in the month	31	29	31	28	27	30	30	26	30	27	29	
Days without corrections	year-to-date	31	60	91	119	146	176	206	232	262	289	318	
<b>2011</b>		<u>January</u>	<u>February</u>	<u>March</u>	<u>April</u>	<u>May</u>	<u>June</u>	<u>July</u>	<u>August</u>	<u>September</u>	<u>October</u>	<u>November</u>	<u>December</u>
<b>Hour Corrections</b>													
Number of hours with corrections	in the month	1	0	1	0	12	4	6	1	0	1	0	0
Number of hours	in the month	744	672	743	720	744	720	744	744	720	744	721	744
% of hours with corrections	in the month	0.13%	0.00%	0.13%	0.00%	1.61%	0.56%	0.81%	0.13%	0.00%	0.13%	0.00%	0.00%
% of hours with corrections	year-to-date	0.13%	0.07%	0.09%	0.07%	0.39%	0.41%	0.47%	0.43%	0.38%	0.36%	0.32%	0.30%
<b>Interval Corrections</b>													
Number of intervals corrected	in the month	1	0	1	0	42	12	54	2	0	2	0	0
Number of intervals	in the month	8,956	8,085	8,928	8,671	8,972	8,760	9,060	9,022	8,697	8,989	8,707	8,989
% of intervals corrected	in the month	0.01%	0.00%	0.01%	0.00%	0.47%	0.14%	0.60%	0.02%	0.00%	0.02%	0.00%	0.00%
% of intervals corrected	year-to-date	0.01%	0.01%	0.01%	0.01%	0.10%	0.11%	0.18%	0.16%	0.14%	0.13%	0.12%	0.11%
<b>Hours Reserved</b>													
Number of hours reserved	in the month	1	0	1	0	14	6	7	6	0	13	0	0
Number of hours	in the month	744	672	743	720	744	720	744	744	720	744	721	744
% of hours reserved	in the month	0.13%	0.00%	0.13%	0.00%	1.88%	0.83%	0.94%	0.81%	0.00%	1.75%	0.00%	0.00%
% of hours reserved	year-to-date	0.13%	0.07%	0.09%	0.07%	0.44%	0.51%	0.57%	0.60%	0.53%	0.66%	0.60%	0.55%
<b>Days to Correction *</b>													
Avg. number of days to correction	in the month	3.00	0.00	0.00	0.00	0.86	0.25	3.00	0.00	0.00	0.59	0.00	0.00
Avg. number of days to correction	year-to-date	3.00	3.00	1.50	1.50	1.00	0.77	1.07	1.00	1.00	0.98	0.98	0.98
<b>Days Without Corrections</b>													
Days without corrections	in the month	30	28	30	30	24	26	29	30	30	30	30	31
Days without corrections	year-to-date	30	58	88	118	142	168	197	227	257	287	317	348

\* Calendar days from reservation date.

### Percentage of Real-Time Corrections

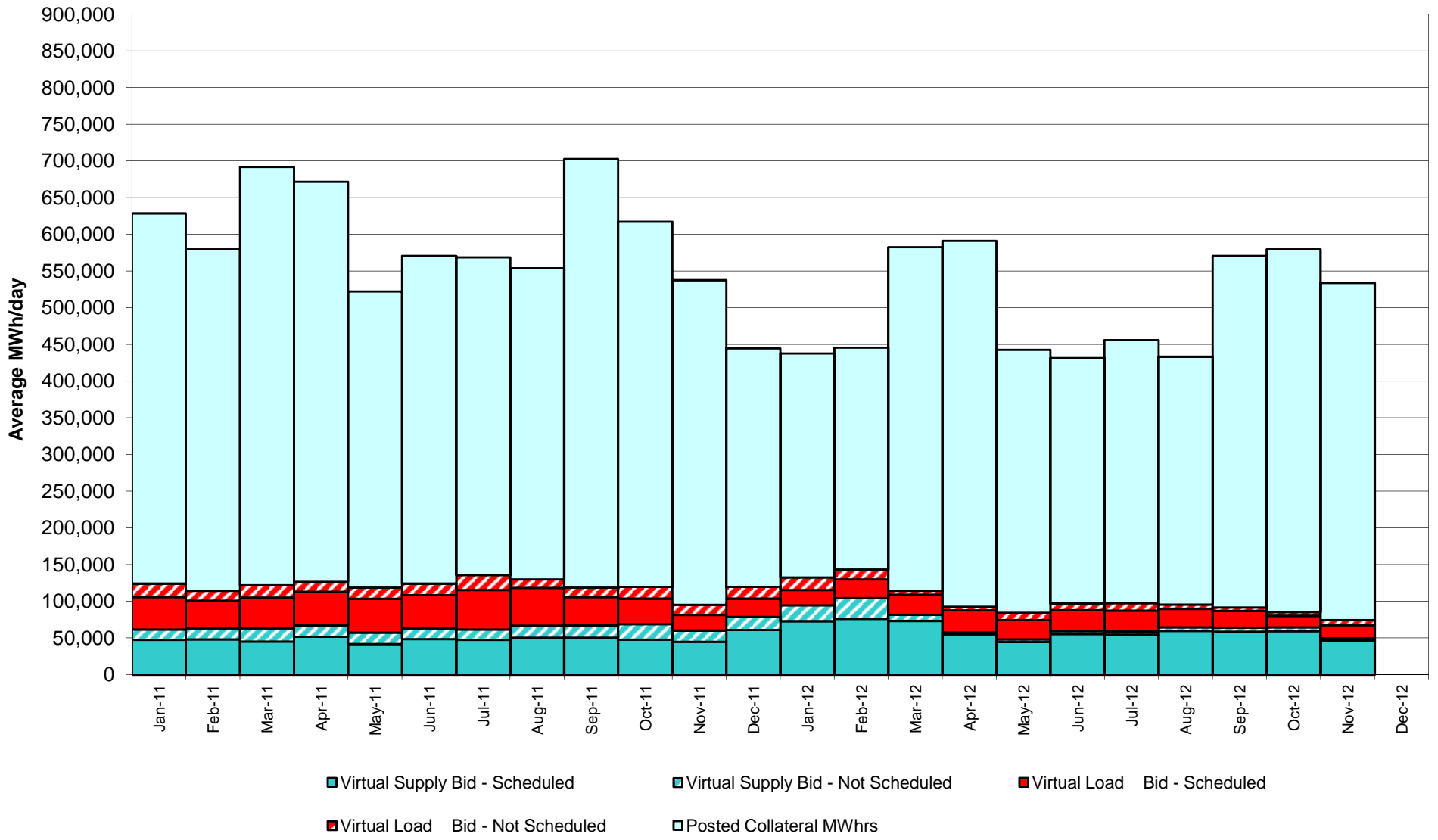


### Annual average time period for making Price Corrections (from reservation date) \*

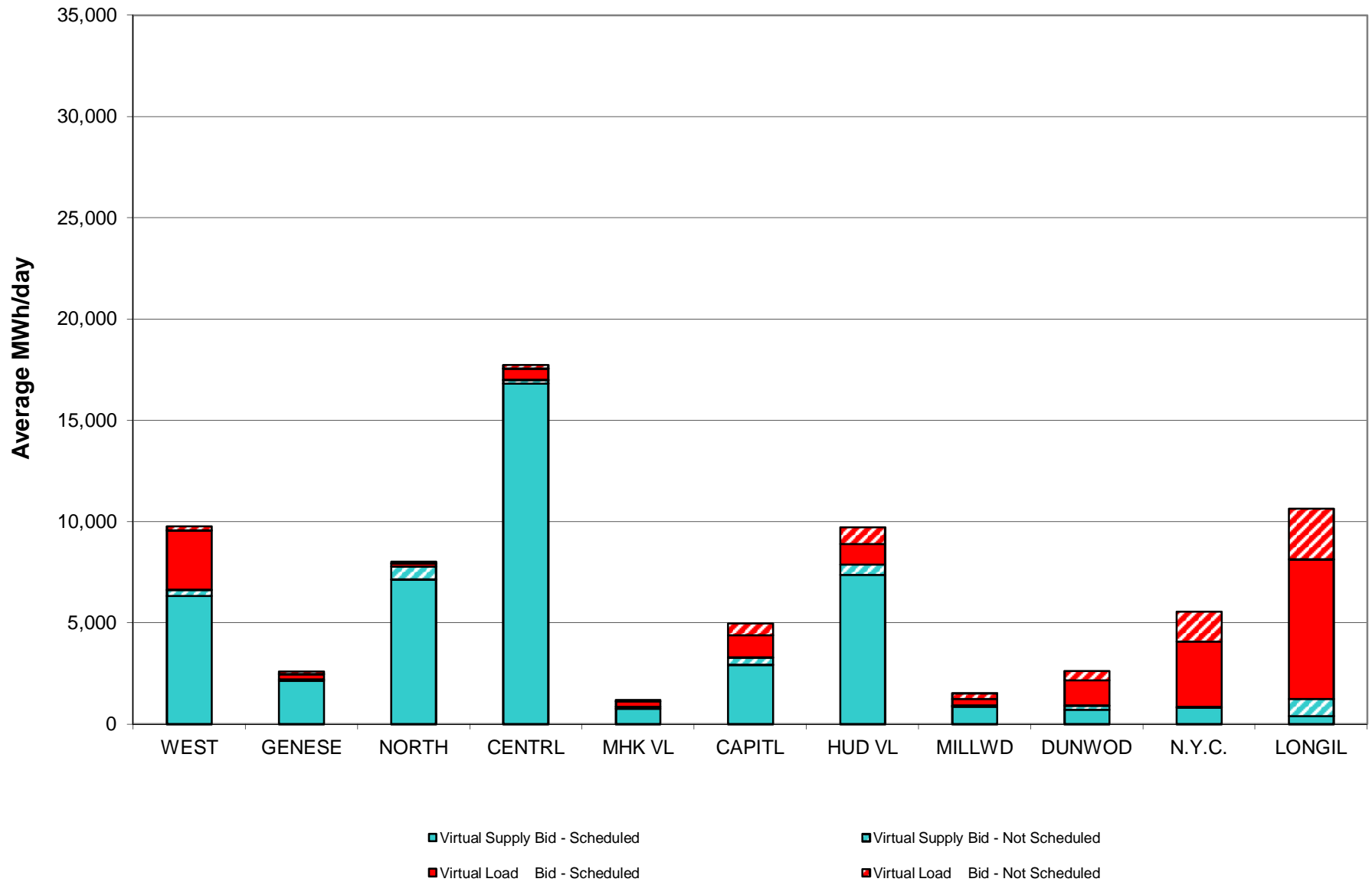


\* Calendar days from reservation date.

## NYISO Virtual Trading Average MWh per day



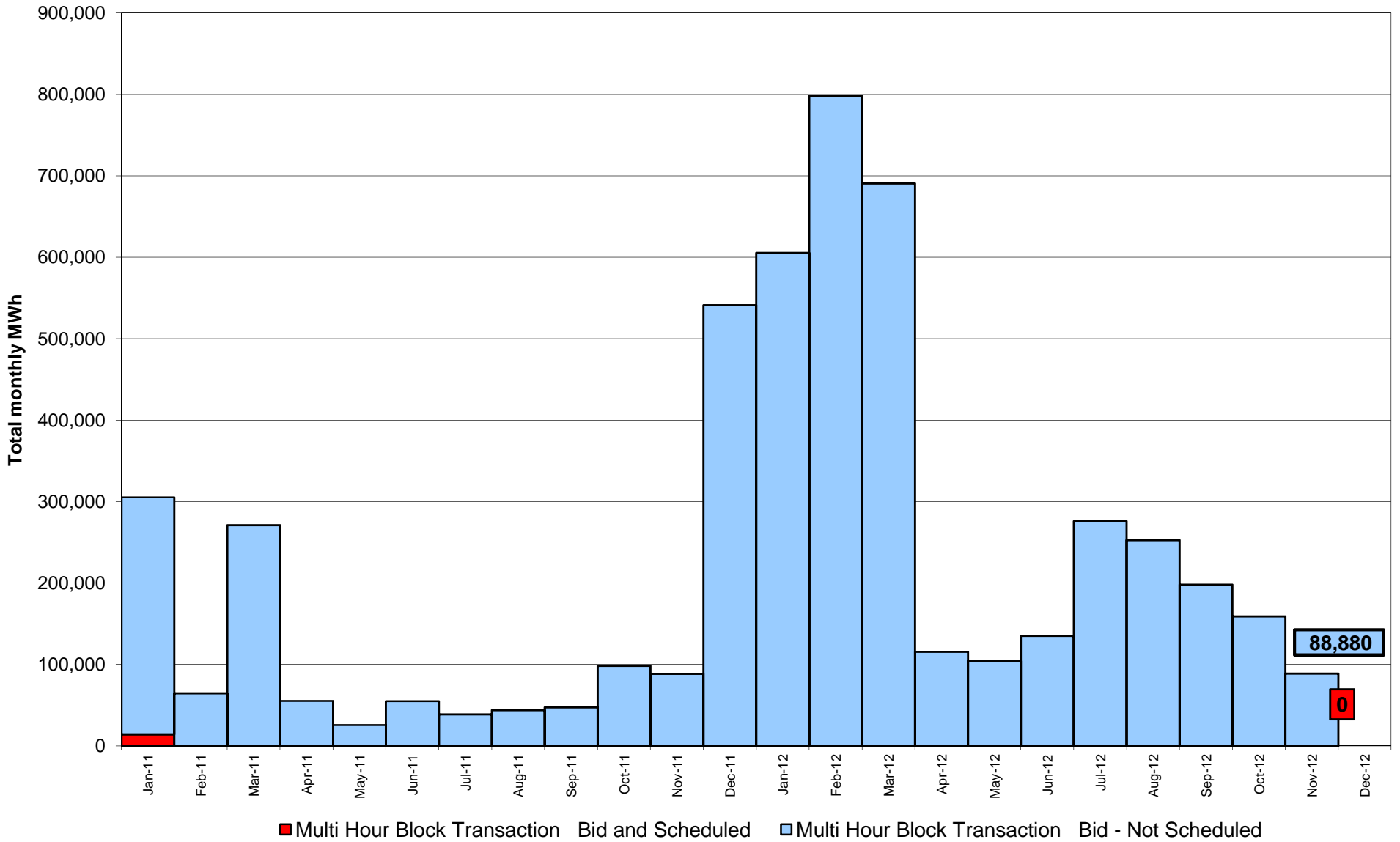
### Virtual Load and Supply Zonal Statistics through November 30, 2012



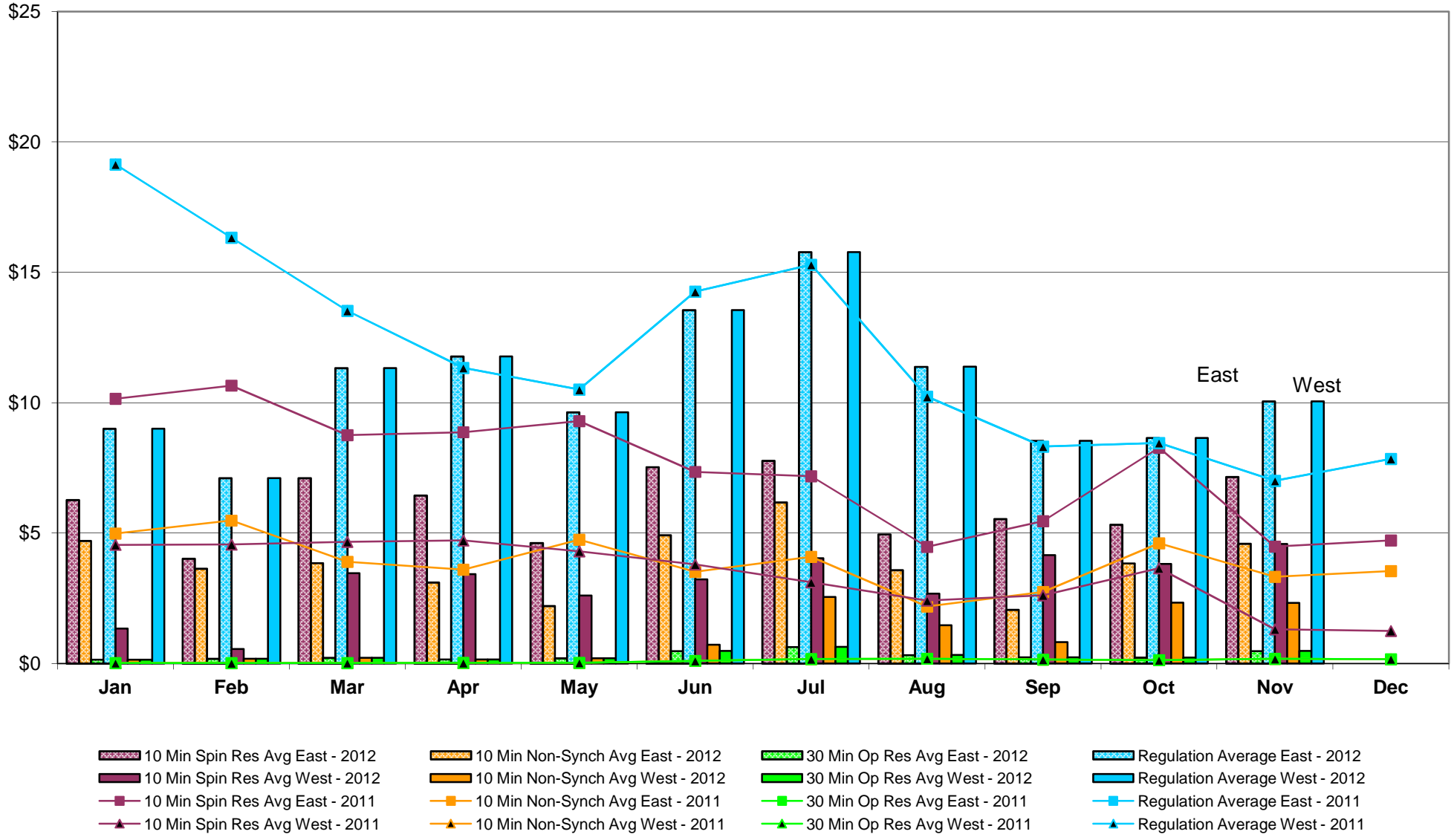
**Virtual Load and Supply Zonal Statistics (Average MWh/day) - 2012**

		Virtual Load Bid		Virtual Supply Bid				Virtual Load Bid		Virtual Supply Bid				Virtual Load Bid		Virtual Supply Bid	
Zone	Date	Scheduled	Not Scheduled	Scheduled	Not Scheduled	Zone	Date	Scheduled	Not Scheduled	Scheduled	Not Scheduled	Zone	Date	Scheduled	Not Scheduled	Scheduled	Not Scheduled
<b>WEST</b>	Jan-12	2,246	938	13,593	956	<b>MHK VL</b>	Jan-12	419	967	1,488	1,127	<b>DUNWOD</b>	Jan-12	1,401	461	1,432	189
	Feb-12	5,195	315	15,119	1,672		Feb-12	444	935	1,592	1,303		Feb-12	1,805	219	2,922	625
	Mar-12	5,008	874	15,504	1,856		Mar-12	521	101	863	196		Mar-12	816	227	1,039	135
	Apr-12	6,077	492	11,547	427		Apr-12	399	104	872	130		Apr-12	1,476	429	1,084	202
	May-12	3,533	808	11,651	385		May-12	255	407	860	206		May-12	2,192	720	813	333
	Jun-12	4,260	717	12,286	467		Jun-12	385	215	908	164		Jun-12	2,349	780	792	226
	Jul-12	5,598	1,402	10,293	440		Jul-12	441	105	1,026	141		Jul-12	4,354	1,058	572	326
	Aug-12	5,302	988	9,443	409		Aug-12	376	33	901	186		Aug-12	3,710	465	806	472
	Sep-12	3,819	595	6,159	422		Sep-12	576	55	952	86		Sep-12	1,478	309	1,086	429
	Oct-12	2,282	342	5,259	444		Oct-12	213	40	858	49		Oct-12	1,152	160	1,007	349
	Nov-12	2,932	200	6,324	319		Nov-12	253	64	773	99		Nov-12	1,250	450	720	199
	Dec-12						Dec-12						Dec-12				
<b>GENESE</b>	Jan-12	257	102	5,254	64	<b>CAPITL</b>	Jan-12	1,903	5,590	3,842	3,364	<b>N.Y.C.</b>	Jan-12	4,572	4,060	2,511	9,344
	Feb-12	553	52	5,238	271		Feb-12	1,408	4,213	3,379	5,116		Feb-12	2,819	3,414	4,839	10,519
	Mar-12	866	61	6,036	283		Mar-12	1,126	369	2,777	904		Mar-12	5,449	1,074	3,035	1,548
	Apr-12	580	151	7,104	147		Apr-12	1,557	645	2,625	244		Apr-12	6,909	688	1,188	66
	May-12	887	449	7,306	213		May-12	1,126	527	3,813	763		May-12	5,170	1,758	907	56
	Jun-12	1,648	236	6,271	225		Jun-12	2,949	597	3,591	855		Jun-12	4,056	1,578	1,300	137
	Jul-12	1,404	154	4,496	238		Jul-12	600	552	4,115	723		Jul-12	5,402	1,959	1,019	306
	Aug-12	639	46	4,820	175		Aug-12	851	302	3,747	626		Aug-12	4,066	711	1,121	314
	Sep-12	374	94	5,719	115		Sep-12	1,017	306	2,267	903		Sep-12	3,181	572	879	199
	Oct-12	259	88	5,117	114		Oct-12	623	199	3,580	818		Oct-12	2,676	666	1,427	185
	Nov-12	252	126	2,134	79		Nov-12	1,083	598	2,946	356		Nov-12	3,221	1,484	809	58
	Dec-12						Dec-12						Dec-12				
<b>NORTH</b>	Jan-12	289	967	7,215	1,189	<b>HUD VL</b>	Jan-12	3,466	693	9,513	2,413	<b>LONGIL</b>	Jan-12	5,372	2,036	684	1,383
	Feb-12	332	935	7,359	1,119		Feb-12	5,087	794	9,250	3,788		Feb-12	6,810	1,496	473	1,708
	Mar-12	478	131	7,753	691		Mar-12	5,032	665	8,136	1,221		Mar-12	6,675	1,276	298	624
	Apr-12	357	85	6,365	645		Apr-12	3,748	1,147	11,772	442		Apr-12	7,354	943	129	17
	May-12	127	379	5,511	686		May-12	5,563	1,356	7,084	563		May-12	6,077	2,303	135	69
	Jun-12	149	56	6,391	795		Jun-12	4,574	1,246	7,085	426		Jun-12	6,801	2,805	261	195
	Jul-12	108	15	5,360	378		Jul-12	5,085	1,306	6,520	530		Jul-12	2,980	2,990	889	1,147
	Aug-12	365	16	6,284	761		Aug-12	4,027	841	6,628	747		Aug-12	4,274	2,005	560	932
	Sep-12	241	45	6,925	732		Sep-12	4,499	867	7,947	887		Sep-12	6,107	1,876	531	1,151
	Oct-12	271	56	7,051	423		Oct-12	2,396	792	7,023	673		Oct-12	5,260	2,656	479	1,140
	Nov-12	140	88	7,156	634		Nov-12	1,016	806	7,386	506		Nov-12	6,881	2,506	401	847
	Dec-12						Dec-12						Dec-12				
<b>CENTRL</b>	Jan-12	526	1,178	26,589	1,270	<b>MILLWD</b>	Jan-12	505	206	929	50	<b>NYISO</b>	Jan-12	20,956	17,198	73,050	21,349
	Feb-12	757	1,175	25,087	2,011		Feb-12	379	161	949	88		Feb-12	25,588	13,708	76,209	28,222
	Mar-12	993	171	27,015	1,187		Mar-12	442	99	736	79		Mar-12	27,405	5,047	73,193	8,725
	Apr-12	991	169	11,465	143		Apr-12	556	134	1,019	109		Apr-12	30,003	4,987	55,170	2,572
	May-12	630	543	5,516	265		May-12	602	540	875	237		May-12	26,162	9,789	44,469	3,776
	Jun-12	596	292	16,084	263		Jun-12	919	583	530	124		Jun-12	28,686	9,104	55,500	3,877
	Jul-12	747	339	19,954	150		Jul-12	1,234	361	455	113		Jul-12	27,954	10,241	54,699	4,491
	Aug-12	912	88	25,079	153		Aug-12	709	138	478	72		Aug-12	25,232	5,631	59,865	4,848
	Sep-12	636	138	25,455	243		Sep-12	557	136	945	254		Sep-12	22,485	4,995	58,866	5,421
	Oct-12	254	121	27,007	517		Oct-12	555	115	700	190		Oct-12	15,941	5,236	59,507	4,901
	Nov-12	542	184	16,833	177		Nov-12	340	267	869	42		Nov-12	17,910	6,774	46,352	3,317
	Dec-12						Dec-12						Dec-12				

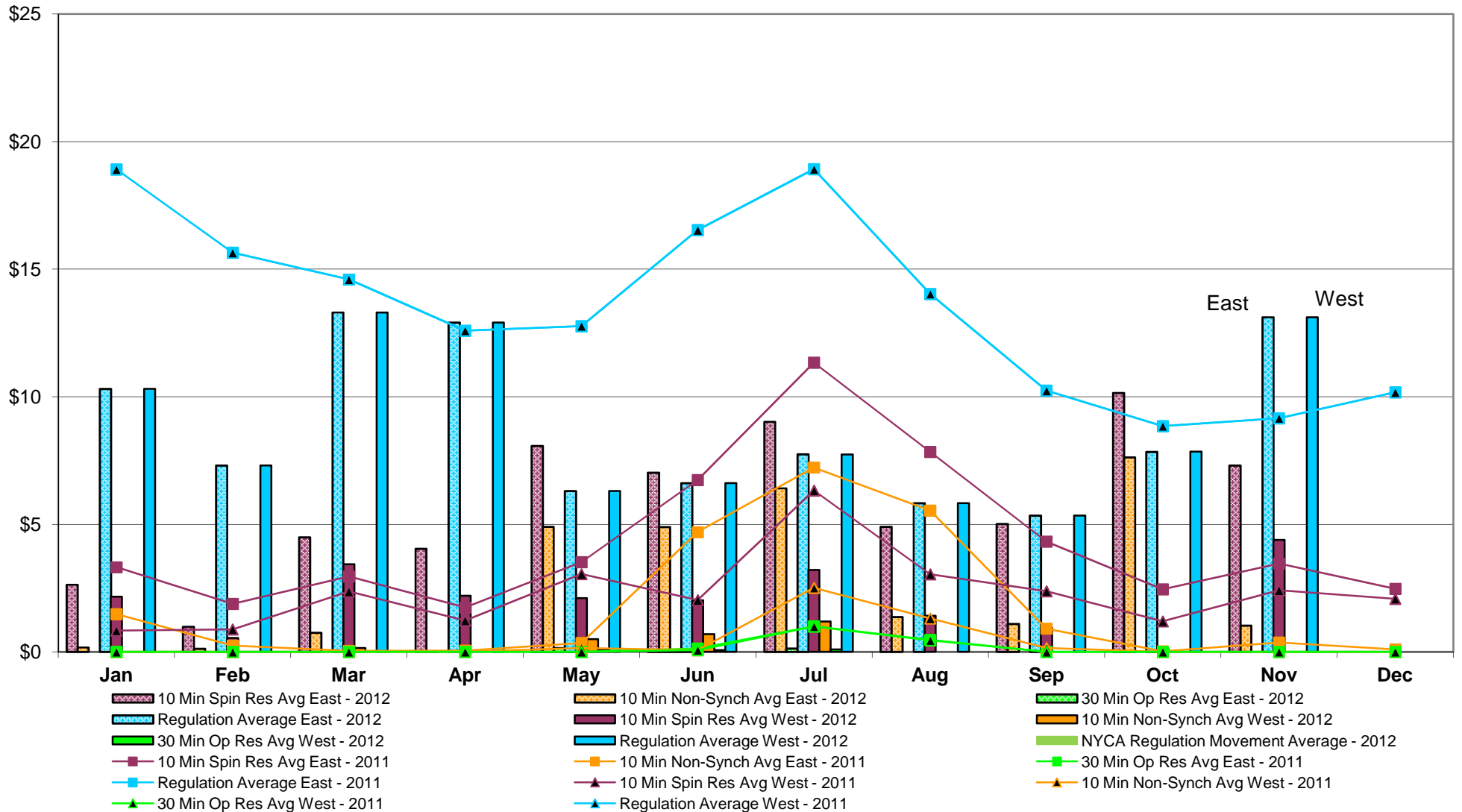
## NYISO Multi Hour Block Transactions Monthly Total MWh



## NYISO Monthly Average Ancillary Service Prices Day Ahead Market 2011 - 2012



## NYISO Monthly Average Ancillary Service Prices RTC Market 2011 - 2012



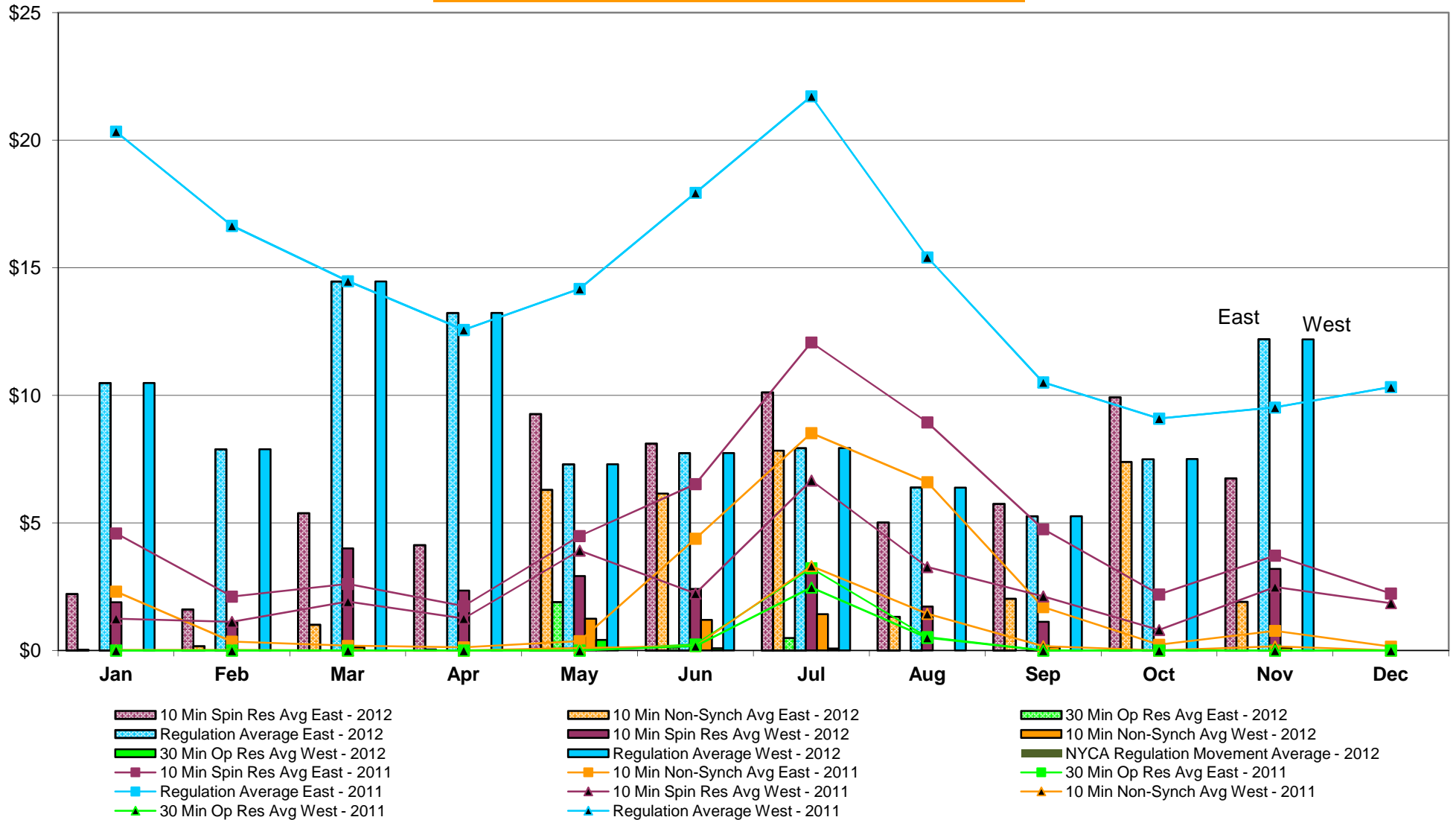
Market Mitigation and Analysis.  
Prepared: 12/4/2012 2:36 PM

AC

Note: NYCA Regulation Movement Data available after 10/27/2012.

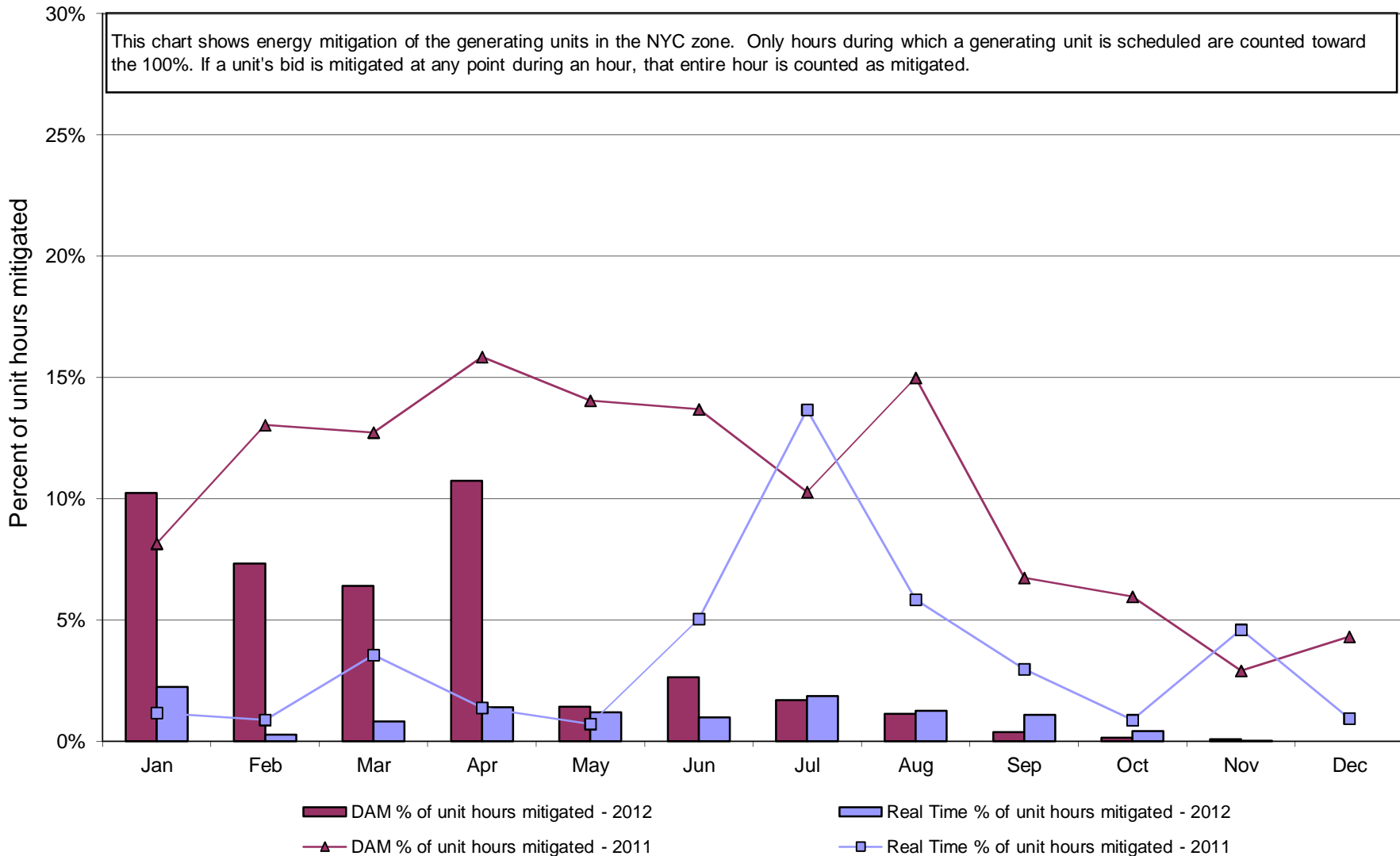


## NYISO Monthly Average Ancillary Service Prices Real Time Market 2011 - 2012

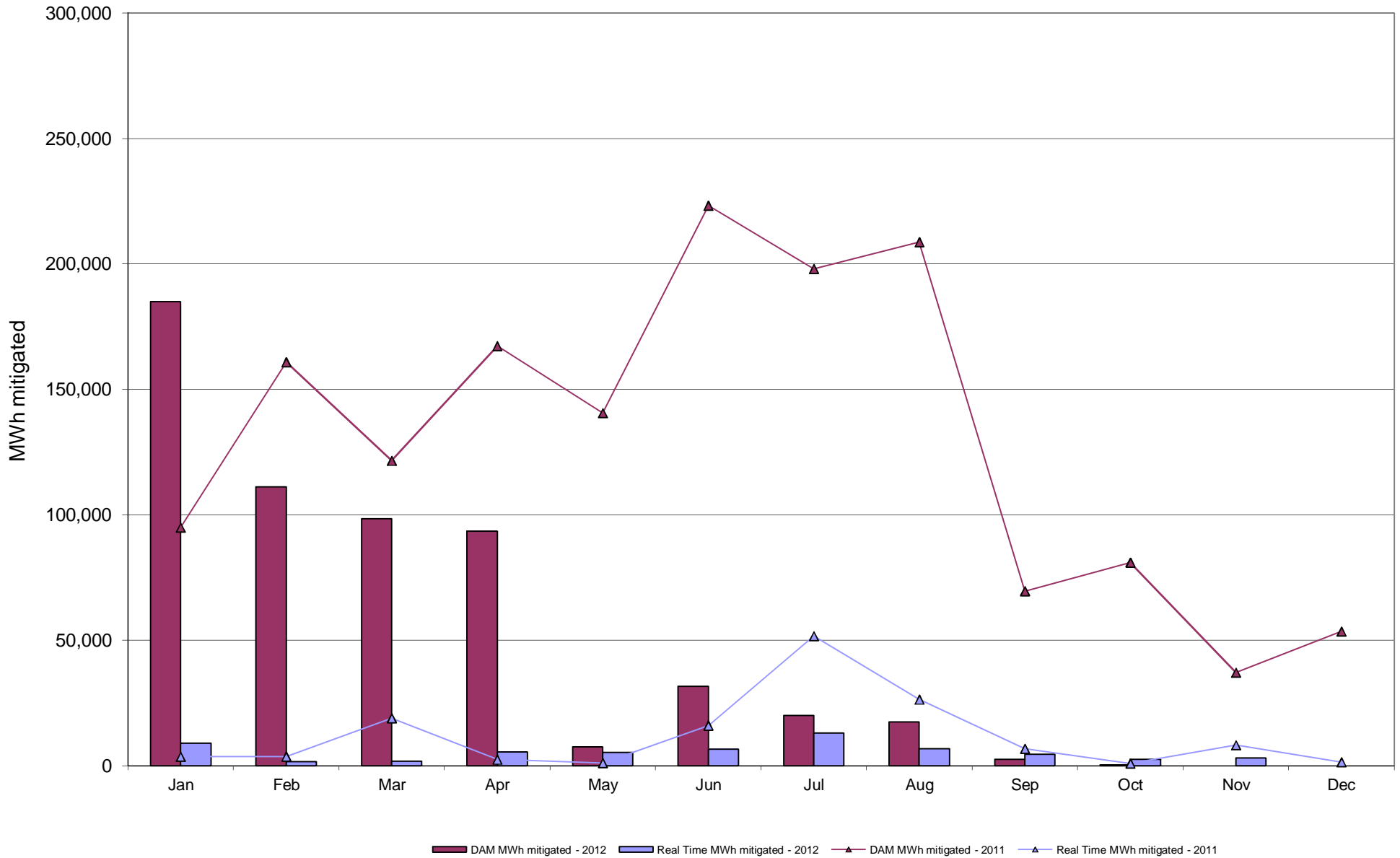




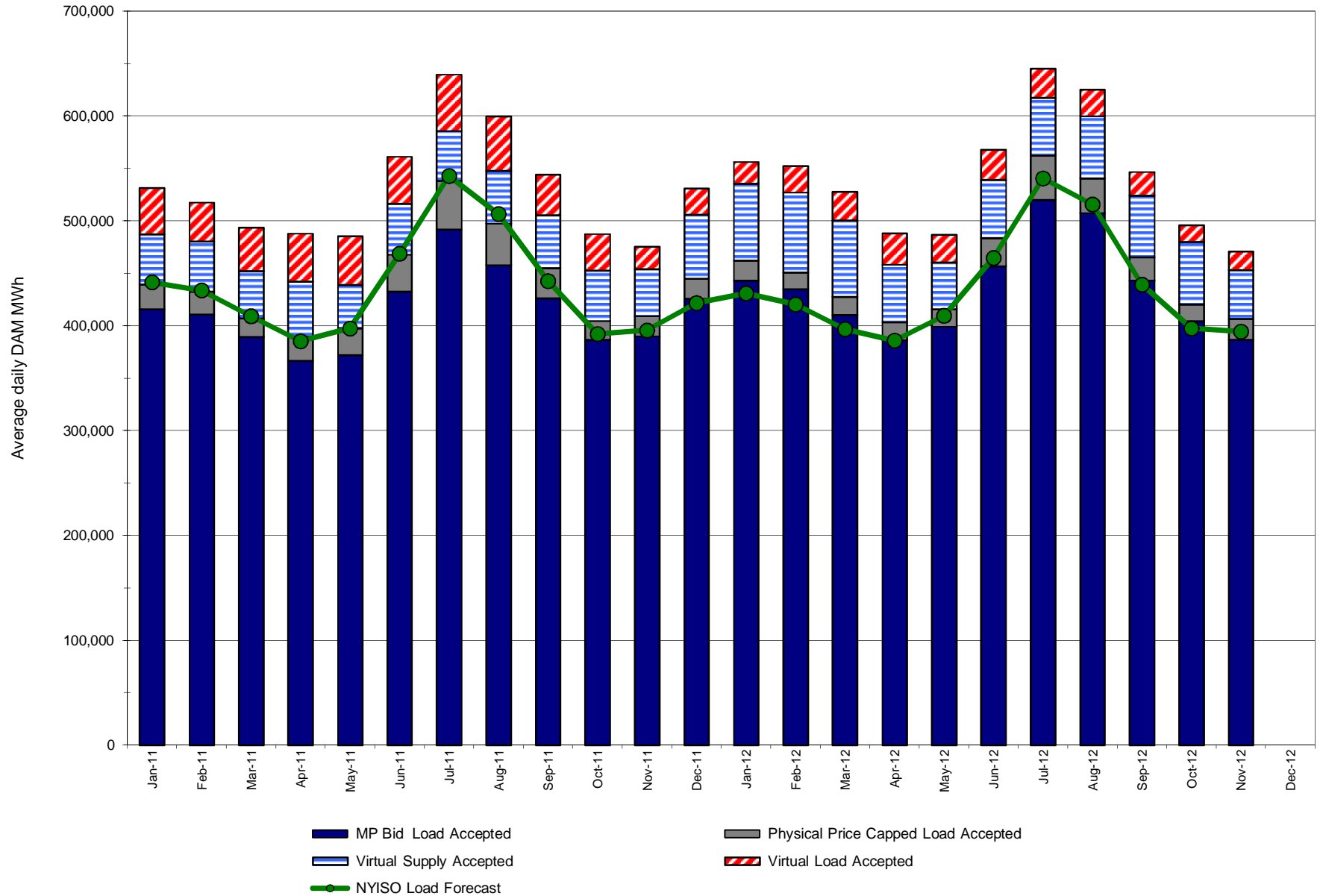
## NYISO In City Energy Mitigation - AMP (NYC Zone) 2011 - 2012 Percentage of committed unit-hours mitigated



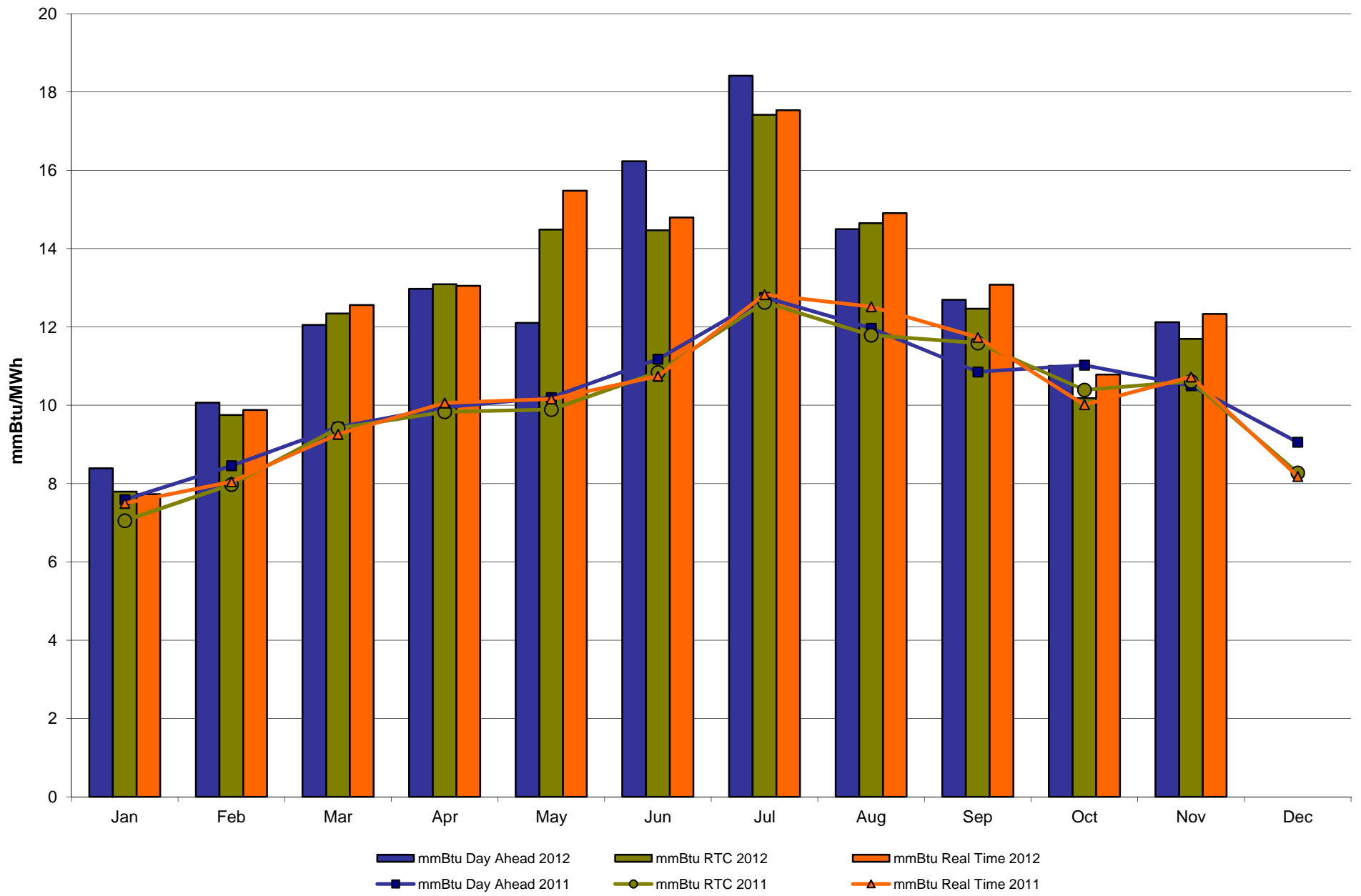
**NYISO In City Energy Mitigation (NYC Zone) 2011 - 2012  
Monthly megawatt hours mitigated**



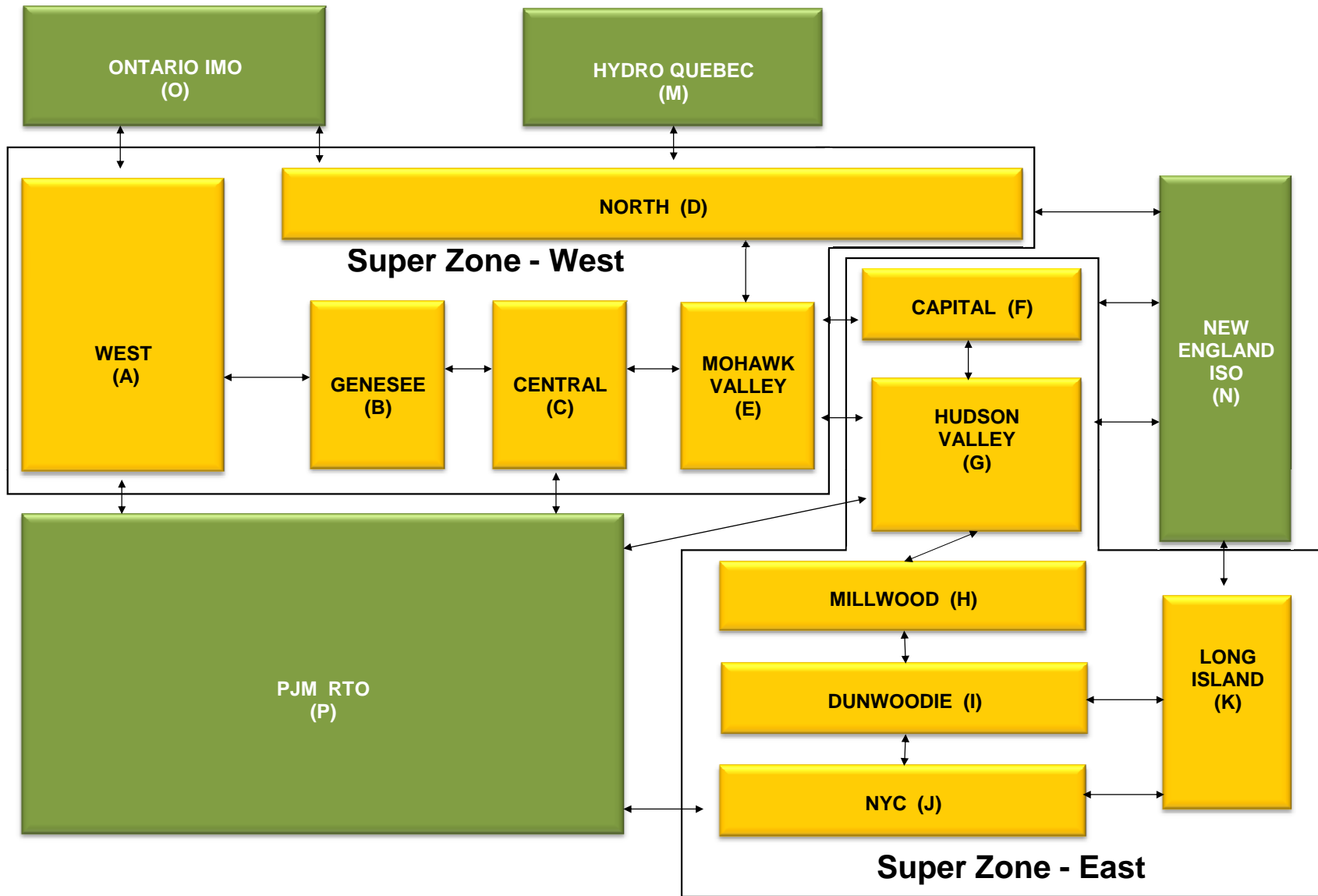
### NYISO Average Daily DAM Load Bid Summary



## Monthly Implied Heat Rate 2011-2012



# NYISO LBMP ZONES



**Billing Codes for Chart 4-C**

<b>Chart - C Category Name</b>	<b>Billing Code</b>	<b>Billing Category Name</b>
Bid Production Cost Guarantee Balancing	81203	Balancing NYISO Bid Production Cost Guarantee - Internal Units
Bid Production Cost Guarantee Balancing	81204	Balancing NYISO Bid Production Cost Guarantee - External Units
Bid Production Cost Guarantee Balancing	81205	Balancing NYISO Bid Production Cost Guarantee Expenditure due to Curtailed Imports
Bid Production Cost Guarantee Balancing	81208	Balancing NYISO Bid Production Cost Guarantee - Internal Units
Bid Production Cost Guarantee Balancing	81209	Balancing NYISO Bid Production Cost Guarantee - External Units
Bid Production Cost Guarantee Balancing	81213	Balancing NYISO Bid Production Cost Guarantee Expenditure due to Curtailed Imports
Bid Production Cost Guarantee DAM	81201	DAM NYISO Bid Production Cost Guarantee - Internal Units
Bid Production Cost Guarantee DAM	84001	EDRP/SCR Demand Response - Local
Bid Production Cost Guarantee DAM	84101	EDRP/SCR Demand Response - NYISO Wide
Bid Production Cost Guarantee DAM	81401	DAM Price Responsive Load Program
Bid Production Cost Guarantee DAM	81202	DAM NYISO Bid Production Cost Guarantee - External Units
Bid Production Cost Guarantee DAM	81206	DAM NYISO Bid Production Cost Guarantee - Internal Units
Bid Production Cost Guarantee DAM	81207	DAM NYISO Bid Production Cost Guarantee - External Units
Bid Production Cost Guarantee DAM Virtual	81501	DAM Virtual Bid Production Cost Guarantee
DAM Contract Balancing	81315	DAM Contract Balancing
DAM Contract Balancing	81317	DAM Contract Balancing
Local Reliability Balancing	81002	Balancing Local Reliability Bid Production Cost Guarantee
Local Reliability Balancing	83901	Margin Restoration (MOB) Revenue
Local Reliability DAM	81001	DAM Local Reliability Bid Production Cost Guarantee
NYISO Cost of Operations	80901	NYISO Cost Of Operations
NYISO Cost of Operations	80902	NYISO Cost Of Operations
NYISO Cost of Operations	83501	NYISO Cost Of Operations
NYISO Cost of Operations	83502	NYISO Cost Of Operations
Residuals Balancing	81302	Balancing Market Energy Residual
Residuals Balancing	81304	Balancing Market Loss Residual
Residuals Balancing	81305	Balancing Market Congestion Balancing
Residuals Balancing	81306	Emergency Energy Purchases
Residuals Balancing	81307	Emergency Energy Sales
Residuals Balancing	81309	Balancing Market Energy Residual
Residuals Balancing	81311	Balancing Market Loss Residual
Residuals Balancing	81312	Balancing Market Congestion Balancing
Residuals Balancing	81313	Emergency Energy Purchases
Residuals Balancing	81314	Emergency Energy Sales
Residuals DAM	81301	Day Ahead Market Energy Residual
Residuals DAM	81303	Day Ahead Market Loss Residual
Residuals DAM	81308	Day Ahead Market Energy Residual
Residuals DAM	81310	Day Ahead Market Loss Residual



## Summary Description of Upcoming Regulatory Compliance Filings, FERC Rulemakings, and Recent Submitted Filings and Issued Orders on NYISO Matters

### Upcoming Compliance Filings

Filing Due Date	Upcoming Compliance Filings (Description)	Docket Number	Comments
12/15/2012	NYISO annual compliance filing with PSC re: informational report on infrastructure master plan filing for new facility	NYS PSC Case 10-E-0640	NYISO petition to PSC for authority to incur in indebtedness: report of anticipated infrastructure plans for the upcoming five-year period 2013-2017
01/11/2013 tentative	NYISO compliance filing re: MST section 17, Attachment B on interface pricing	ER08-1281-010	8/22/12 FERC issued an order accepting/denying in part re: NYISO request for rehearing of 3/15/12 order that directed compliance filing
01/22/2013	NYISO compliance filing re: Orders 755 and 755A - frequency regulation	ER112-1653-000, 001	11/29/12 FERC notice granting NYISO request for extension of time to 1/22/13 to file compliance

### Recently Received Orders

Filing Date	Filing Summary (Order issued)	Docket Number	Order Date	Order Summary
04/12/2012	Third party complaint v. NYISO re: Technical Bulletin 217 prohibiting behind the meter generation from participating in the ICAP special case resources program	EL12-56-000	12/07/2012	FERC order granting the complaint and directing NYISO to make a compliance filing
10/09/2012	NYISO compliance filing re: advance notification of effective date for tariff revisions concerning a new non-historic fixed price transmission congestion contract	ER12-1868-001	12/06/2012	FERC letter order accepting notification of effective date (i.e., 10/24/12) for tariff revisions, as requested
10/12/2012	NYISO one time compliance filing re: announcement of 15-minute scheduling at the PJM Neptune Proxy Bus	ER11-2547-007	11/14/2012 11/19/2012	FERC letter order accepting filing effective 10/30/12, as requested. FERC issued errata notice to change incorrect reference from Keystone to Neptune proxy bus
10/22/2012	NYISO filing of MST revisions regarding eligibility criteria for units in the Minimum Oil Burn program	ER13-166-000	11/29/2012	FERC letter order accepting revisions effective 12/21/12, as requested
11/20/2012	NYISO request for extension of time to submit compliance filing and shortened notice re: Order 755 frequency regulation	ER12-1653-000 and 001	11/29/2012	FERC notice granting extension of time until 1/22/13 to file compliance

Draft – For Discussion Purposes Only

11/29/2012	NYISO, et. al., request for extension of time to file comments re: Marble River complaint v. Noble Clinton, Noble Ellenburg, Chateaugay Windpark and NYISO	EL13-20-000	11/30/2012	FERC notice granting an extension of time to 1/25/13 to file comments
------------	--	-------------	------------	---

## Recently Submitted Filings

<b>Filing Date</b>	<b>Filing Summary</b>	<b>Docket Number</b>
11/29/2012	NYISO filing of a joint motion for deferral of the comment period for Marble River's complaint	EL13-20-000
11/30/2012	NYISO compliance filing re: Services Tariff Rate Schedule 5, Black Start and System Restoration Service Provisions	ER12-2568-002
11/30/2012	NYISO filing of supplemental comments with the Commodity Futures Trading Commission re: 77 FR 52138 - CFTC proposed order from certain ISOs/RTOs to exempt specified transactions authorized by a tariff or protocol from provisions of the Commodity Exchange Act	CFTC - 77 FR 52138